

**. Kugelgelagerte Schienensysteme
. Kugelgelagerte Edelstahlblöcke**

OH ist seit 40 Jahren Hersteller von Yachtausrüstung. Hier stellen wir Ihnen das neue OH Kugellagerprogramm vor, eine sehr komplette und absolut hochwertige Produktreihe von gleit- und kugelgelagerten Edelstahlblöcken, Umlenkern, Fußblöcken, sowie Schot-, Spinnaker- und Fullbatten- Schienensystemen.

Das Besondere an den Blöcken ist die Technologie. OH arbeitet mit Vielfachlagern auf großen Lagerdurchmessern. Es werden besonders belastbare HiLoad Delrinkugeln verwendet. Die Blockgehäuse sind aus maschinen- oder manuell hochglanzpoliertem Edelstahl gefertigt.

Die Rutschersysteme sind für Rutscherkörper und für Schotrollen gleit- und auch kugelgelagert lieferbar. Die Schotrollengehäuse sind aus Edelstahl gefertigt. Das komplette Programm umfasst 3 Schienengrößen und sogar Spi- Mastenschiene- und Fullbatten Rutscher.



OH – das ist modernste HiTech Ausrüstung zu sehr attraktiven Preisen!



SAILTEC GmbH

Hasselbinnen 28
D-22869 Schenefeld bei Hamburg

Telefon: 040 / 822994-0
Fax: 040 / 8304279

E-Mail: info@sailtec.de
Internet: www.sailtec.de



Welcome to our High Performance and Classic Catalogue for 2008

OH Marine Equipment is a Danish company manufacturing deck hardware. We have more than 40 years experience producing high quality boat fittings in aluminium and stainless steel.

Ole Henriksen (OH) founded the company and began making boat fittings for his own use in the late 50's as he felt the market could not supply the quality products he demanded.

Soon the interest for his products rose, and in the beginning of the 60's, he established a workshop on Oesterbro, Copenhagen. As the production increased, a move to Stenloese in 1967 was necessary. In 1976 the factory in Jyllinge was built and has since been enlarged twice to accommodate rising demand.

Today the product line includes blocks, tracks, travellers and custom made products. We continuously develop new products and our wide range of products covers equipment for boats up to around 120 feet and breaking loads up to 20,000 kg. Having contact with yachtsmen worldwide lays the foundation for development of products with emphasis on superior design, safety, minimum wear on rope and longevity. This makes OH equipment an obvious choice when requiring high performance equipment.

OH MARINE EQUIPMENT A/S

(OH Blokke A/S)

Moellehaven 5, DK-4040 Jyllinge, Denmark

Telephone: +45 46730885 Telefax: +45 46731182

e-mail: mail@ohmarine.com web: www.ohmarine.com



Content	Page No.
News	3
Custom made products	3
Product info - How to find the right OH block	4
High Performance Blocks:	
Size 57	5, 6, 7
Size 75	5, 6, 7
Size 100	8, 9
Size 125	8, 9
Size 150	8, 9
Size 175	10
Foot Blocks	12
Pivoting Lead Blocks	13
Over Top Lead Blocks	14
Mast Lead Blocks	15
Lead Blocks	16, 17, 18
22 mm Travellers:	
Reefing	19
Genoa	19, 20
Mainsheet	21, 22, 23
Spinnaker	24, 25
Batten	26
Control	27, 28
Tracks	28
Mast Groove Slugs	28
30 mm Travellers:	
Reefing	29
Genoa	29, 30
Mainsheet	31, 32, 33
Spinnaker	34, 35
Batten	36
Control	37, 38
Tracks	38
Mast Groove Slugs	38
42 mm Travellers - Medium & Large	
Genoa	39
Mainsheet	40
Spinnaker	41
Control	42
Tracks	42
Spinnaker pole ends	43
Maintenance	43
Classic Catalogue	-
Price list	-

News

OH Marine Equipment have added two more blocks to the range of of high performance blocks size 100:



A fiddle block with and without becket both with a swivel with 12 mm shackle and a maximum working load of 3.250 kg. For further specifications please see page 8.

Custom made products

Since the company's foundation we have manufactured many custom made products e.g. for Nordic Mast Production A/S, R.D.M. Sparcraft, Romar b.v., Sailtec GmbH and X-Yachts A/S within short delivery and at reasonable prices.

Our expertise in creating custom made products is one of several areas differentiating us from many of our competitors.



The image shows a custom made back stay block with a stainless steel sheave of size 175 mm and a maximum working load of 12.000 kg.

How to find the right OH block:

- Classic Series 100:** For small sailing yachts, dinghies etc. or small jobs in larger boats
working load max 300 kg - breaking load 600 kg - max rope 8 mm.
- Classic Series 200:** For sailing yachts up to 25 feet or small jobs in larger boats
working load max 500 kg - breaking load 1,000 kg - max rope 10 mm.
- Classic Series 300:** For sailing yachts up to 30 feet or small jobs in larger boats
working load max 625 kg - breaking load 1,250 kg - max rope 14 mm.
- Classic Series 300-2:** For sailing yachts up to 35 feet or small jobs in larger boats
working load max 775 kg - breaking load 1,550 kg - max rope 14 mm.
- Classic Series 400:** For sailing yachts up to 38 feet or small jobs in larger boats
working load max 950 kg - breaking load 1,900 kg - max rope 14 mm.
- Classic Series 500:** For sailing yachts up to 42 feet or small jobs in larger boats
working load max 1,350 kg - breaking load 2,700 kg - max rope 16 mm.
- Classic Series 600:** For sailing yachts up to 45 feet or small jobs in larger boats
working load max 1,800 kg - breaking load 3,600 kg - max rope 16 mm.
- Classic Series 700:** For sailing yachts up to 45 feet or small jobs in larger boats
working load max 1,800 kg - breaking load 3,600 kg - max rope 14 mm.
- Classic Series 800:** For sailing yachts up to 45 feet or small jobs in larger boats
working load max 1,800 kg - breaking load 3,600 kg - max rope 18 mm.
(for blocks in aluminium)
- For sailing yachts up to 50 feet or small jobs in larger boats
working load max 2,400 kg - breaking load 4,800 kg - max rope 18 mm.
(for blocks in stainless steel)
- Classic Series 900:** For sailing yachts up to 60 feet or small jobs in larger boats
working load max 2,800 kg - breaking load 5,600 kg - max rope 22 mm.
- High Performance Size 57:** For sailing yachts up to 35 feet or small jobs in larger boats
working load max 1,800 kg - breaking load 3,600 kg - max rope 14 mm.
- High Performance Size 75:** For sailing yachts up to 45 feet or small jobs in larger boats
working load max 3,600 kg - breaking load 4,800 kg - max rope 18 mm.
- High Performance Size 100:** For sailing yachts up to 60 feet or small jobs in larger boats
working load max 3,250 kg - breaking load 6,500 kg - max rope 22 mm.
- High Performance Size 125:** For sailing yachts up to 80 feet or small jobs in larger boats
working load max 5,000 kg - breaking load 10,000 kg - max rope 22 mm.
- High Performance Size 150:** For sailing yachts up to 100 feet or small jobs in larger boats
working load max 8,000 kg - breaking load 16,000 kg - max rope 28 mm.
- High Performance Size 175:** For sailing yachts up to 120 feet or small jobs in larger boats
working load max 10,000 kg - breaking load 20,000 kg - max rope 32 mm.

The working loads shown in this catalogue are intended as a guide line only and are not guaranteed. Working loads are approximately 50 % of breaking loads.

Our High Performance blocks size 57 and 75 are developed with emphasis on design and strength. The aluminium ball bearing sheaves are produced with 3 rows of delrin balls for smooth running even under heavy loads. The blocks are bolted together with allen screws for easy disassembling if needed. They are supplied in standard polishing or high polished stainless steel.



No. 710705 / 710805
No. 710675 / 710775 / 710875

No. 710724 / 710825
No. 710704 / 710804
No. 710723 / 710823

No. 710703 / 710803
No. 710676 / 710776 / 710876
No. 710677 / 710777 / 710877

Block features:

Size 57 - Block side in 2 mm stainless steel 316
Size 75 - Block side in 2.5 mm stainless steel 316
bolted together with allen screws

Ball bearing sheave in aluminium (6082 T6)
natural anodised minimum 25 my
with 3 rows of delrin balls

Top in aluminium (6082 T6)
natural anodised minimum 25 my

Blocks Size 57:

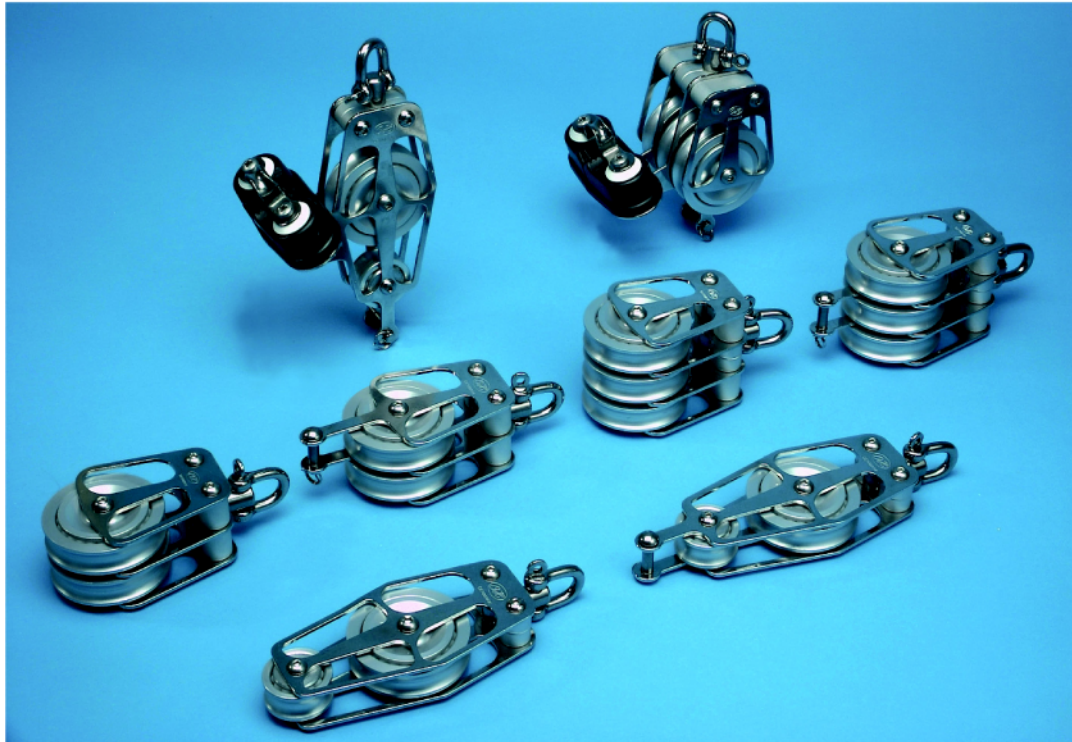
Article No.	Type	SWL kg	BL kg	Sheave size mm	Max rope	Length mm	Top type	Weight g
710703	Single block	1800	3600	57 x 16	14	120	Swivel with 6 mm shackle	215
710704	Single with becket	1800	3600	57 x 16	14	146	Swivel with 6 mm shackle	235
710705	Single stand-up	1800	3600	57 x 16	14	115	Pad eye Ø 50 mm	280
710723*	Single block with snap shackle	1800	3600	57 x 16	14	143	Swivel with snap shackle	275
710724	Single with cam cleat and becket	1800	3600	57 x 16	14	115	Swivel with 6 mm shackle	385
710675	Back stay block	900	1800	45 x 16	14	77	6 mm pin bolt	90
710676	Back stay block with becket	900	1800	45 x 16	14	101	6 mm pin bolt	105
710677	Mast foot block	900	1800	45 x 16	14		M8 Treading	
710775	Back stay block	1200	2400	57 x 16	14	90	8 mm pin bolt	148
710776	Back stay block with becket	1200	2400	57 x 16	14	168	8 mm pin bolt	168
710777	Mast foot block	1200	2400	57 x 16	14	122	M10 Treading	170

Blocks Size 75:

Article No.	Type	SWL kg	BL kg	Sheave size mm	Max rope	Length mm	Top type	Weight g
710803	Single block	2400	4800	75 x 20	18		Swivel with 8 mm shackle	520
710804	Single with becket	2400	4800	75 x 20	18		Swivel with 8 mm shackle	
710805	Single stand-up	2400	4800	75 x 20	18		Pad eye Ø 60 mm	
710823*	Single block with snap shackle	2400	4800	75 x 20	18		Swivel with snap shackle	
710824	Single with cam cleat and becket	2400	4800	75 x 20	18		Swivel with 8 mm shackle	
710875	Back stay block	1800	3600	75 x 17	14		10 mm pin bolt	
710876	Back stay block with becket	1800	3600	75 x 17	14		10 mm pin bolt	
710877	Mast foot block	1800	3600	75 x 20	18		M12 treading	

*All blocks with swivel are available with snap shackle

Our High Performance blocks size 57 and 75 are developed with emphasis on design and strength. The aluminium ball bearing sheaves are produced with 3 rows of delrin balls for smooth running even under heavy loads. The blocks are bolted together with allen screws for easy disassembling if needed. They are supplied in standard polishing or high polished stainless steel.



No. 710709 / 710809

No. 710717 / 710817
No. 710710 / 710810
No. 710714 / 710814

No. 710721 / 710821
No. 710719 / 710819
No. 710715 / 710815

No. 710720 / 710820

Block features:

Size 57 - Block side in 2 mm stainless steel 316
Size 75 - Block side in 2.5 mm stainless steel 316
bolted together with allen screws

Ball bearing sheave in aluminium (6082 T6)
natural anodised minimum 25 my
with 3 rows of delrin balls

Top in aluminium (6082 T6)
natural anodised minimum 25 my

Blocks Size 57:

Article No.	Type	SWL kg	BL kg	Sheave size mm	Max rope	Length mm	Top type	Weight g
710709	Double block	1800	3600	57 x 16	14	120	Swivel with 6 mm shackle	355
710710	Double with becket	1800	3600	57 x 16	14	146	Swivel with 6 mm shackle	375
710714	Fiddle block	1800	3600	57/32 x 16	14	165	Swivel with 6 mm shackle	275
710715	Fiddle with becket	1800	3600	57/32 x 16	14	185	Swivel with 6 mm shackle	290
710717	Fiddle with cam cleat and becket	1800	3600	57/32 x 16	14	185	Swivel with 6 mm shackle	425
710719	Triple block	1800	3600	57 x 16	14	120	Swivel with 6 mm shackle	500
710720	Triple with becket	1800	3600	57 x 16	14	146	Swivel with 6 mm shackle	518
710721	Triple with cam cleat and becket	1800	3600	57 x 16	14	146	Swivel with 6 mm shackle	672

Blocks Size 75:

Article No.	Type	SWL kg	BL kg	Sheave size mm	Max rope	Length mm	Top type	Weight g
710809	Double block	2400	4800	75 x 20	18		Swivel with 8 mm shackle	
710810	Double with becket	2400	4800	75 x 20	18		Swivel with 8 mm shackle	
710814	Fiddle block	2400	4800	75/40 x 20	18	225	Swivel with 8 mm shackle	630
710815	Fiddle with becket	2400	4800	75/40 x 20	18	250	Swivel with 8 mm shackle	650
710817	Fiddle with cam cleat and becket	2400	4800	75/40 x 20	18	250	Swivel with 8 mm shackle	810
710819	Triple block	2400	4800	75 x 20	18		Swivel with 8 mm shackle	
710820	Triple with becket	2400	4800	75 x 20	18		Swivel with 8 mm shackle	
710821	Triple with cam cleat and becket	2400	4800	75 x 20	18		Swivel with 8 mm shackle	

Our High Performance blocks size 57 and 75 are developed with emphasis on design and strength. The aluminium ball bearing sheaves are produced with 3 rows of delrin balls for smooth running even under heavy loads. The blocks are bolted together with allen screws for easy disassembling if needed. They are supplied in standard polishing or high polished stainless steel.



No. 710730 / 710830
No. 710731 / 710831



No. 710734 / 710834
No. 710735 / 710835



No. 710719 / 710819
No. 710675 / 710775
No. 710736 / 710836

Block features:

Size 57 - Block side in 2 mm stainless steel 316
Size 75 - Block side in 2.5 mm stainless steel 316
bolted together with allen screws

Ball bearing sheave in aluminium (6082 T6)
natural anodised minimum 25 my
with 3 rows of delrin balls

Top in aluminium (6082 T6)
natural anodised minimum 25 my

Blocks Size 57:

Article No.	Type	SWL kg	BL kg	Sheave size mm	Max rope	Length mm	Top type	Weight g
710730	Double fiddle block	1800	3600	57/32 x 16	14	164	Swivel with 6 mm shackle	452
710731	Double fiddle with cam cleat and cross block	1800	3600	57/32 x 16	14	215	Swivel with 6 mm shackle	715
710734	Double with cross block	1800	3600	57/32 x 16	14	174	Swivel with 6 mm shackle	425
710735	Double fiddle with double cam cleat	1800	3600	57 x 16	14	164	Swivel with 6 mm shackle	655
710736	Triple with cam cleat and trim block	1800	3600	57/45 x 16	14	210	Swivel with 6 mm shackle	840
710719	Triple block	1800	3600	57 x 16	14	120	Swivel with 6 mm shackle	500
710675	Back stay block	900	1800	45 x 16	14		6 mm pin bolt	90

Blocks Size 75:

Article No.	Type	SWL kg	BL kg	Sheave size mm	Max rope	Length mm	Top type	Weight g
710830	Double fiddle block	2400	4800	75/40 x 20	18		Swivel with 8 mm shackle	
710831	Double fiddle with cam cleat and cross block	2400	4800	75/40 x 20	18		Swivel with 8 mm shackle	
710834	Double with cross block	2400	4800	75/40 x 20	18		Swivel with 8 mm shackle	
710835	Double with double cam cleat	2400	4800	75 x 20	18		Swivel with 8 mm shackle	
710836	Triple with cam cleat and trim block	2400	4800	75/57 x 20/16	18/14		Swivel with 8 mm shackle	
710819	Triple block	2400	4800	75 x 20	18		Swivel with 8 mm shackle	
710775	Back stay block	1200	2400	57 x 16	14	90	8 mm pin bolt	148

Our High Performance blocks size 100, 125 and 150 are developed with emphasis on design and strength. The aluminium ball bearing sheaves are produced with 4 rows of delrin balls for smooth running even under heavy loads. The blocks are bolted together with allen screws for easy disassembling if needed.

High Performance blocks size 100 are supplied in standard polishing or high polished stainless steel. High Performance blocks Size 125 and 150 are supplied in high polished stainless steel as standard.



No. 710905 / 711105 / 711205
 No. 710909 / 711109 / 711209
 No. 710903 / 711103 / 711203

No. 710914
 No. 710910 / 711110 / 711210
 No. 710904 / 711104 / 711204

No. 710919 / 711119 / 711219
 No. 710975 / 711175 / 711275
 No. 710923 / 711123 / 711223

No. 710920 / 711120 / 711220
 No. 710976 / 711176 / 711276
 No. 710915



Block features:

Size 100 - Block side in 3 mm stainless steel 316
 Size 125 - Block side in 4 mm stainless steel 316
 Size 150 - Block side in 5 mm stainless steel 316
 bolted together with allen screws

Ball bearing sheave in aluminium (6082 T6)
 natural anodised minimum 25 my
 with 4 rows of delrin balls

Top in aluminium (6082 T6)
 natural anodised minimum 25 my

Blocks Size 100:

Article No.	Type	SWL kg	BL kg	Sheave size mm	Max rope	Length mm	Top type	Weight g
710903	Single block	3250	6500	100 x 25	22	220	Swivel with 12 mm shackle	1110
710904	Single with becket	3250	6500	100 x 25	22	250	Swivel with 12 mm shackle	
710905	Single stand-up	3250	6500	100 x 25	22		Pad eye Ø 75 mm	
710909	Double block	3250	6500	100 x 25	22	220	Swivel with 12 mm shackle	
710910	Double with becket	3250	6500	100 x 25	22	250	Swivel with 12 mm shackle	
710914	Fiddle block	3250	6500	100/60 x 25	22	305	Swivel with 12 mm shackle	
710915	Fiddle with becket	3250	6500	100/60 x 25	22	340	Swivel with 12 mm shackle	
710919	Triple block	3250	6500	100 x 25	22	220	Swivel with 12 mm shackle	
710920	Triple with becket	3250	6500	100 x 25	22	250	Swivel with 12 mm shackle	
710923*	Single block with snap shackle	3250	6500	100 x 25	22		Swivel with snap shackle	
710975	Back stay block	2500	5000	100 x 17	14		13 mm pin bolt	
710976	Back stay block with becket	2500	5000	100 x 17	14		13 mm pin bolt	

Blocks Size 125:

Article No.	Type	SWL kg	BL kg	Sheave size mm	Max rope	Length mm	Top type	Weight g
711103	Single block	5000	10000	125 x 25	22		Swivel with 14 mm shackle	
711104	Single with becket	5000	10000	125 x 25	22		Swivel with 14 mm shackle	
711105	Single stand-up	5000	10000	125 x 25	22	240	Pad eye Ø 100 mm	2240
711109	Double block	5000	10000	125 x 25	22		Swivel with 14 mm shackle	
711110	Double with becket	5000	10000	125 x 25	22		Swivel with 14 mm shackle	
711119	Triple block	5000	10000	125 x 25	22		Swivel with 14 mm shackle	
711120	triple with becket	5000	10000	125 x 25	22		Swivel with 14 mm shackle	
711123*	Single block with snap shackle	5000	10000	125 x 25	22		Swivel with snap shackle	
711175	Back stay block	3500	7500	125 x 25	22		15 mm pin bolt	
711176	Back stay block with becket	3500	7500	125 x 25	22		15 mm pin bolt	

Blocks Size 150:

Article No.	Type	SWL kg	BL kg	Sheave size mm	Max rope	Length mm	Top type	Weight g
711203	Single block	8000	16000	150 x 30	28	320	Swivel with 16 mm shackle	3095
711204	Single with becket	8000	16000	150 x 30	28	375	Swivel with 16 mm shackle	
711205	Single stand-up	8000	16000	150 x 30	28		Pad eye Ø 100 mm	
711209	Double block	8000	16000	150 x 30	28	320	Swivel with 16 mm shackle	5010
711210	Double with becket	8000	16000	150 x 30	28	375	Swivel with 16 mm shackle	5250
711219	Triple block	8000	16000	150 x 30	28	320	Swivel with 16 mm shackle	
711220	Triple with becket	8000	16000	150 x 30	28	375	Swivel with 16 mm shackle	
711223*	Single block with snap shackle	5000	10000	150 x 30	28	298	Swivel with snap shackle	2825
711275	Back stay block	5000	10000	150 x 30	28		18 mm pin bolt	
711276	Back stay block with becket	5000	10000	150 x 30	28	280	18 mm pin bolt	

*All blocks with swivel are available with snap shackle

Our High Performance blocks size 175 are developed with emphasis on design and strength. The aluminium ball bearing sheaves are produced with 5 rows of delrin balls for smooth running even under heavy loads. The blocks are bolted together with allen screws for easy disassembling if needed.

The High Performance blocks size 175 are supplied in high polished stainless steel.



No. 711309
No. 711303

No. 711310
No. 711304

No. 711319
No. 711375

No. 711320
No. 711376

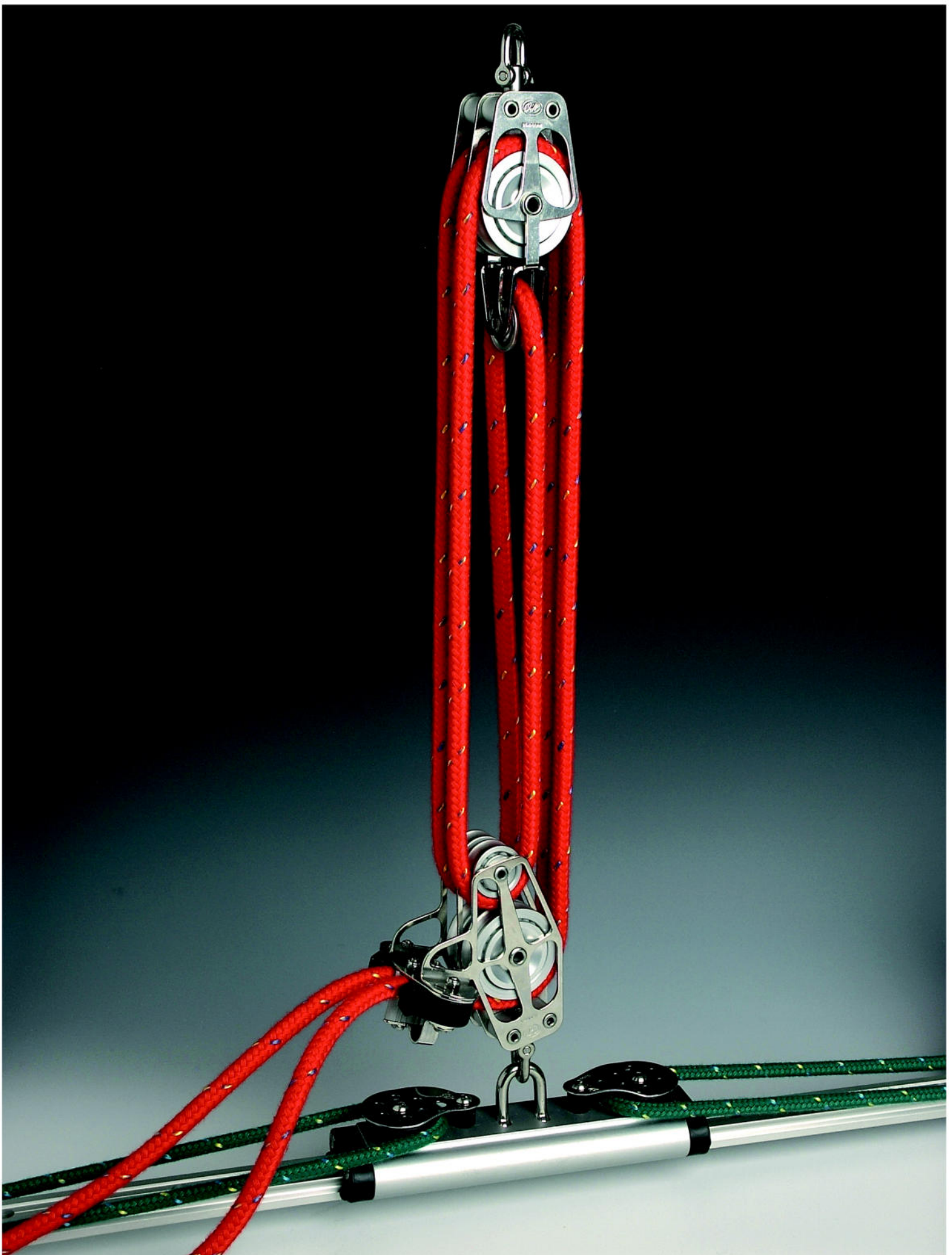
Block features:

Block side in 6 mm stainless steel 316 bolted together with allen screws

Ball bearing sheave in aluminium (6082 T6) natural anodised minimum 25 my with 5 rows of delrin balls

Top in aluminium (6082 T6) natural anodised minimum 25 my

Article No.	Type	SWL kg	BL kg	Sheave size mm	Max rope	Length mm	Top type	Weight g
711303	Single block	10000	20000	175 x 35	32		Swivel with 20 mm shackle	
711304	Single with becket	10000	20000	175 x 35	32		Swivel with 20 mm shackle	
711309	Double block	10000	20000	175 x 35	32		Swivel with 20 mm shackle	
711310	Double with becket	10000	20000	175 x 35	32		Swivel with 20 mm shackle	
711319	Triple block	10000	20000	175 x 35	32		Swivel with 20 mm shackle	
711320	Triple with becket	10000	20000	175 x 35	32		Swivel with 20 mm shackle	
711375	Back stay block	7500	15000	175 x 35	32		20 mm pin bolt	
711376	Back stay block with becket	7500	15000	175 x 35	32		20 mm pin bolt	



Our High Performance foot blocks are developed with emphasis on design and strength. The aluminium ball bearing sheaves are produced with a minimum of 3 rows of delrin balls for smooth running even under heavy loads. The blocks are bolted together with allen screws for easy disassembling if needed.

The High Performance foot blocks are supplied in standard polishing or high polished stainless steel.



Block features:

Block side in stainless steel 316
Fasteners included

Ball bearing sheave in
aluminium (6082 T6)
natural anodised minimum 25 my
with 3 rows of delrin balls

Top in aluminium (6082 T6)
natural anodised minimum 25 my

Article No.	Type	SWL kg (each sheave)	BL kg	Sheaves	Sheave size mm	Max rope mm	Length mm	Width mm	Height mm	Fasteners mm	Weight g
710732	Single foot block with jammer	600	3600	1	57 x 16	14	87	61	22	6/8	255
710733	Double foot block with jammer	600	3600	2	57 x 16	14	87	61	42	6/8	445
710832	Single foot block with jammer	900	4800	1	75 x 20	18	110	79	26	8/10	470
710833	Double foot block with jammer	900	4800	2	75 x 20	18	110	79	50	8/10	745



Block features:

Block side in stainless steel 316
Fasteners included

Ball bearing sheave in
aluminium (6082 T6)
natural anodised minimum 25 my
with a minimum of 3 rows of delrin balls

Top in aluminium (6082 T6)
natural anodised minimum 25 my

Article No.	Type	SWL kg (each sheave)	BL kg	Sheaves	Sheave size mm	Max rope mm	Length mm	Width mm	Height mm	Fasteners mm	Weight g
710711	Single foot block	1800	3600	1	57 x 16	14	87	61	22	6/8	173
710712	Double foot block	1800	3600	2	57 x 16	14	87	61	42	6/8	242
710811	Single foot block	2400	4800	1	75 x 20	18	110	79	26	8/10	310
710812	Double foot block	2400	4800	2	75 x 20	18	110	79	50	8/10	378
710911	Single foot block	3250	6500	1	100 x 25	22	145	107	31	10/12	447
710912	Double foot block	3250	6500	2	100 x 25	22	145	107	59	10/12	282
711111*	Single foot block	5000	10000	1	125 x 25	22	184	134	33	14/16	410
711112*	Double foot block	5000	10000	2	125 x 25	22	184	134	62	14/16	518
711211*	Single foot block	8000	16000	1	150 x 30	28	216	162	38	16/18	636
711212*	Double foot block	8000	16000	2	150 x 30	28	216	162	72	16/18	746
711311*	Single foot block	10000	20000	1	175 x 35	32			45	18/20	
711312*	Double foot block	10000	20000	2	175 x 35	32			85	18/20	



Our High Performance pivoting blocks are developed with emphasis on design and strength. The aluminium ball bearing sheaves are produced with a minimum of 3 rows of delrin balls for smooth running even under heavy loads. The blocks are bolted together with allen screws for of easy disassembling if needed.

The High Performance pivoting blocks are supplied in standard polishing or high polished stainless steel.



No. 711091

No. 711095

Block features:

Block side in stainless steel 316

Ball bearing sheave in aluminium (6082 T6) natural anodised minimum 25 my with a minimum of 3 rows of delrin balls

Base plate in aluminium (6082 T6) natural anodised minimum 25 my

Article No.	Type	SWL kg (each sheave)	BL kg	Sheaves	Sheave size mm	Max rope mm	Length mm	Width mm	Height mm	Fasteners mm	Weight g
711091	Pivoting lead block	1800	3600	1	57 x 16	14	120	65	80	6	367
711095	Pivoting lead block double	1800	3600	2	57 x 16	14	120	108	80	6	730
711092	Pivoting lead block	2400	4800	1	75 x 20	16	156	75	102	8	670
711093	Pivoting lead block	3250	6500	1	100 x 25	20	210	98	136	10	1580
711094	Pivoting Lead Block	7000	14000	1	100 x 25	16	180	98	130	12	1930
711097	Pivoting lead block	8000	16000	1	150 x 30	24	280	125	195	16	4190

Our High Performance over top blocks are developed with emphasis on design and strength. The aluminium ball bearing sheaves are produced with a minimum of 3 rows of delrin balls for smooth running even under heavy loads. The blocks are bolted together with allen screws for easy disassembling if needed.

The High Performance over top blocks are supplied in standard polishing or high polished stainless steel.



Block features:

Block side in stainless steel 316

Ball bearing sheave in aluminium (6082 T6) natural anodised minimum 25 my with a minimum of 3 rows of delrin balls

Base plate in aluminium (6082 T6) natural anodised minimum 25 my

Article No.	Type	SWL kg (each sheave)	BL kg	Sheaves	Sheave size mm	Max rope mm	Length mm	Width mm	Height mm	Fasteners mm	Weight g
711055	Single over top lead block	600	1200	1	32 x 16	14		22		5	
711056	Double over top lead block	600	1200	2	32 x 16	14		44		5	
711057	Triple over top lead block	600	1200	3	32 x 16	14		66		5	
711010	Single over top lead block	1000	2000	1	45 x 16	14	63	22	75	6	148
711011	Double over top lead block	1000	2000	2	45 x 16	14	63	44	75	6	289
711012	Triple over top lead block	1000	2000	3	45 x 16	14	63	66	75	6	435
711060	Single over top lead block	1500	3000	1	57 x 16	14	68	22	86	6	208
711061	Double over top lead block	1500	3000	2	57 x 16	14	68	44	86	6	415
711062	Triple over top lead block	1500	3000	3	57 x 16	14	68	66	86	6	617
711065	Single over top lead block	2000	4000	1	75 x 20	18	95	25	117	10	450
711066	Double over top lead block	2000	4000	2	75 x 20	18	95	50	117	10	875
711067	Triple over top lead block	2000	4000	3	75 x 20	18	95	75	117	10	1325



Our High Performance mast lead blocks are developed with emphasis on design and strength. The aluminium ball bearing sheaves are produced with a minimum of 3 rows of delrin balls for smooth running even under heavy loads. The blocks are bolted together with allen screws for easy disassembling if needed.

The High Performance mast lead blocks are supplied in standard polishing or high polished stainless steel.



Block features:

Block side in stainless steel 316

Ball bearing sheave in aluminium (6082 T6)
natural anodised minimum 25 my
with a minimum of 3 rows of delrin balls

Article No.	Type	SWL kg (each sheave)	BL kg	Sheaves	Sheave size mm	Max rope mm	Length mm	Width mm	Height mm	Fasteners mm	Weight g
711045	Single mast lead block	600	1200	1	32 x 16	14	42	22	48	5	73
711046	Double mast lead block	600	1200	2	32 x 16	14	42	44	48	5	133
711047	Triple mast lead block	600	1200	3	32 x 16	14	42	66	48	5	200
711015	Single mast lead block	1000	2000	1	45 x 16	14	63	22	67	6	125
711016	Double mast lead block	1000	2000	2	45 x 16	14	63	44	67	6	244
711017	Triple mast lead block	1000	2000	3	45 x 16	14	63	66	67	6	368
711020	Single mast lead block	1500	3000	1	57 x 16	14	68	22	78	6	180
711021	Double mast lead block	1500	3000	2	57 x 16	14	68	44	78	6	358
711022	Triple mast lead block	1500	3000	3	57 x 16	14	68	66	78	6	530
711050	Single mast lead block	2000	4000	1	75 x 20	18	95	25	98	10	365
711051	Double mast lead block	2000	4000	2	75 x 20	18	95	50	98	10	720
711052	Triple mast lead block	2000	4000	3	75 x 20	18	95	75	98	10	1070
711070	Single mast lead block	3000	6000	1	100 x 25	22	120	31	135	12	784
711071	Double mast lead block	3000	6000	2	100 x 25	22	120	62	135	12	1560
711072	Triple mast lead block	3000	6000	3	100 x 25	22	120	93	135	12	2345
711075*	Single mast lead block	4500	9000	1	125 x 25	22	150	33	165	14	1310
711076*	Double mast lead block	4500	9000	2	125 x 25	22	150	66	165	14	2620
711077*	Triple mast lead block	4500	9000	3	125 x 25	22	150	99	165	14	3930
711080*	Single mast lead block	6000	12000	1	150 x 30	28	185	40	193	16	2385
711081*	Double mast lead block	6000	12000	2	150 x 30	28	185	80	193	16	4770
711082*	Triple mast lead block	6000	12000	3	150 x 30	28	185	120	193	16	7155

* Only available in high polished stainless steel

Our High Performance lead blocks are developed with emphasis on design and strength. The aluminium ball bearing sheaves are produced with 2 rows of delrin balls for smooth running even under heavy loads. The blocks are bolted together with allen screws for easy disassembling if needed.

The High Performance lead blocks are supplied in standard polishing or high polished stainless steel.



Block features:

Block side in stainless steel 316
Fasteners included

Ball bearing sheave in aluminium (6082 T6)
natural anodised minimum 25 my
with 2 rows of delrin balls

Top in black delrin

Article No.	Type	SWL kg (each sheave)	BL kg	Sheaves	Sheave size mm	Max rope mm	Length mm	Width mm	Height mm	Fasteners mm	Weight g
711000	Lead block 2 sheaved	600	1200	2	32 x 16	14	134	35	22	6	173
711001	Lead block 3 sheaved	600	1200	3	32 x 16	14	176	35	22	6	242
711002	Lead block 4 sheaved	600	1200	4	32 x 16	14	218	35	22	6	310
711003	Lead block 5 sheaved	600	1200	5	32 x 16	14	260	35	22	6	378
711004	Lead block 6 sheaved	600	1200	6	32 x 16	14	302	35	22	6	447
711035	Lead block 2 sheaved	1000	2000	2	45 x 16	14	165	48	22	6	282
711036	Lead block 3 sheaved	1000	2000	3	45 x 16	14	220	48	22	6	410
711037	Lead block 4 sheaved	1000	2000	4	45 x 16	14	275	48	22	6	518
711038	Lead block 5 sheaved	1000	2000	5	45 x 16	14	330	48	22	6	636
711039	Lead block 6 sheaved	1000	2000	6	45 x 16	14	385	48	22	6	746



Our High Performance lead blocks are developed with emphasis on design and strength. The aluminium ball bearing sheaves are produced with a minimum of 3 rows of delrin balls for smooth running even under heavy loads. The blocks are bolted together with allen screws for easy disassembling if needed.

The High Performance lead blocks are supplied in standard polishing or high polished stainless steel.



Block features:

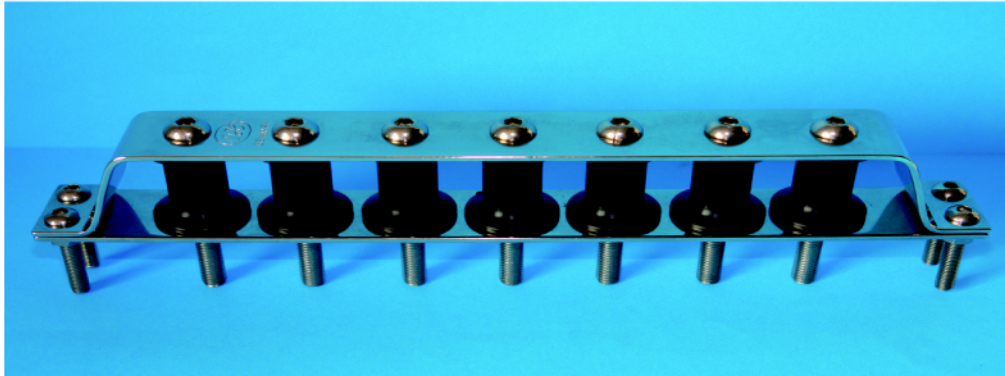
Block side in stainless steel 316
Fasteners included

Ball bearing sheave in
aluminium (6082 T6)
natural anodised minimum 25 my
with a minimum of 3 rows of delrin balls

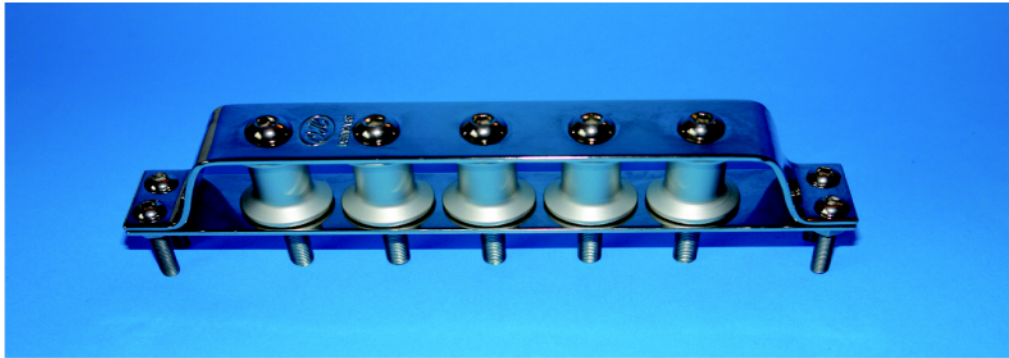
Top in aluminium (6082 T6)
natural anodised minimum 25 my

Article No.	Type	SWL kg (each sheave)	BL kg	Sheaves	Sheave size mm	Max rope mm	Length mm	Width mm	Height mm	Fasteners mm	Weight g
711005	Lead block 2 sheaved	1500	3000	2	57 x 16	14	185	61	22	8	495
711006	Lead block 3 sheaved	1500	3000	3	57 x 16	14	253	61	22	8	690
711007	Lead block 4 sheaved	1500	3000	4	57 x 16	14	320	61	22	8	886
711008	Lead block 5 sheaved	1500	3000	5	57 x 16	14	387	61	22	8	1082
711030	Lead block 2 sheaved	2000	4000	2	75 x 20	18	235	79	26	10/8	1063
711031	Lead block 3 sheaved	2000	4000	3	75 x 20	18	325	79	26	10/8	1446
711032	Lead block 4 sheaved	2000	4000	4	75 x 20	18	415	79	26	10/8	1829
711040	Lead block 2 sheaved	3000	6000	2	100 x 25	22	310	109	32	12/10	2230
711041	Lead block 3 sheaved	3000	6000	3	100 x 25	22	430	109	32	12/10	3115
711042	Lead block 4 sheaved	3000	6000	4	100 x 25	22	550	109	32	12/10	4000

A lead block - organiser - for high loads to divert lines from a mixed bank of stoppers and jammers. The lead block should be placed between stoppers and winch.



Black delrin plan bearing sheaves (no. 710984)



Aluminium sheaves with delrin plan bearing (no. 710987)

Block features:

Block side in stainless steel 316
CC 31 mm between the sheaves
Fasteners included

Black delrin plan bearing
sheaves or aluminium sheaves
with delrin plan bearing

Article No.	Type	SWL kg	BL kg	Sheaves	Sheave size mm	Sheave type	Max rope mm	Length mm	Width mm	Height mm	Fasteners mm	Weight g
Delrin sheaves												
710980	Lead block for high loads 3 sheaved	1800	3600	3	29 x 33.5	Delrin plan bearing	12	158	32	39	6/8	
710981	Lead block for high loads 4 sheaved	1800	3600	4	29 x 33.5	Delrin plan bearing	12	189	32	39	6/8	
710982	Lead block for high loads 5 sheaved	1800	3600	5	29 x 33.5	Delrin plan bearing	12	220	32	39	6/8	
710983	Lead block for high loads 6 sheaved	1800	3600	6	29 x 33.5	Delrin plan bearing	12	251	32	39	6/8	
710984	Lead block for high loads 7 sheaved	1800	3600	7	29 x 33.5	Delrin plan bearing	12	282	32	39	6/8	
Aluminium sheaves												
710985	Lead block for high loads 3 sheaved	1800	3600	3	29 x 33.5	Aluminium with delrin plan bearing	12	158	32	39	6/8	
710986	Lead block for high loads 4 sheaved	1800	3600	4	29 x 33.5	Aluminium with delrin plan bearing	12	189	32	39	6/8	
710987	Lead block for high loads 5 sheaved	1800	3600	5	29 x 33.5	Aluminium with delrin plan bearing	12	220	32	39	6/8	
710988	Lead block for high loads 6 sheaved	1800	3600	6	29 x 33.5	Aluminium with delrin plan bearing	12	251	32	39	6/8	
710989	Lead block for high loads 7 sheaved	1800	3600	7	29 x 33.5	Aluminium with delrin plan bearing	12	282	32	39	6/8	



Choose the 22 mm travellers with recirculating balls if you want to adjust the sheet angle, even under heavy loads, and the slide rods travellers if you want a higher safe working load (SWL).



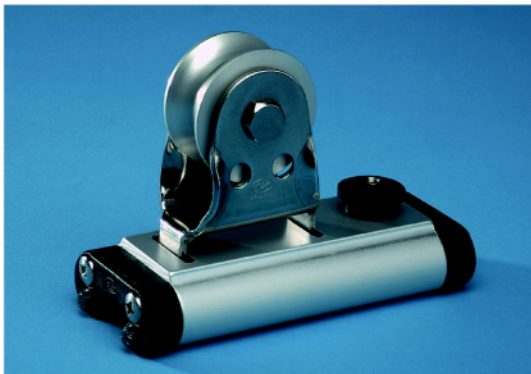
No. 02360

Reefing car features:

- Car body in aluminium (6082 T6)
- Anodised minimum 25 my
- Available in natural or black colour
- End caps in black delrin
- Block side in stainless steel 316
- with black delrin plan bearing sheaves

How to mount the reefing car

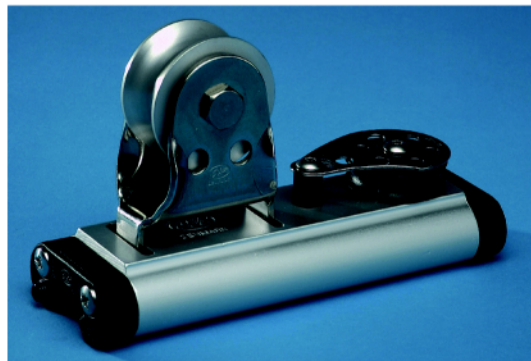
Article No.	Type	SWL kg	BL kg	Sheave size mm	Sheave type	Max rope mm	Length mm	Slide type	Weight g	Track mm
02360	One line reefing car 22 mm	800	1600	35 x 10	Delrin plan bearing	8	123	Delrin balls	255	22



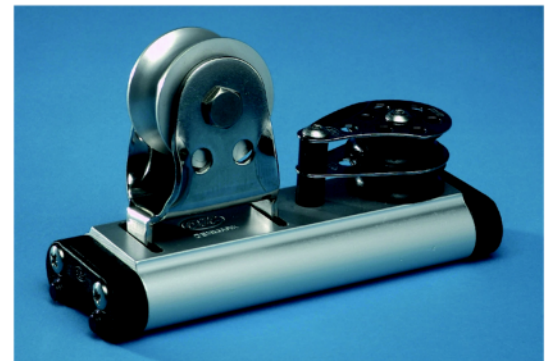
No. 02300
No. 02301



No. 02303
No. 02304



No. 02305
No. 02306



No. 02307
No. 02308

Genoa car features:

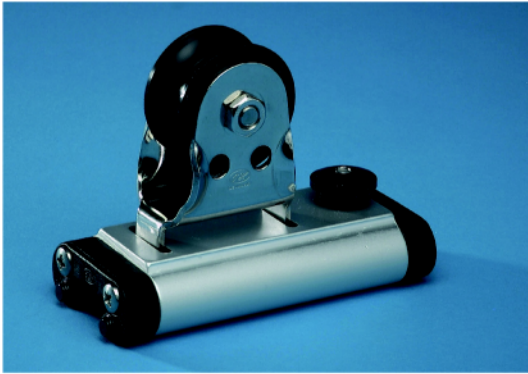
- Car body in aluminium (6082 T6)
- Anodised minimum 25 my
- Available in natural or black colour

- End caps in black delrin
- Polished stainless steel 316 stirrup, pivots 45 degrees to each side with aluminium ball bearing sheave (4 rows of balls)

- Control blocks in stainless steel 316 with black delrin plan bearing sheave 35 x 10 mm
- Max rope diameter 8 mm
- SWL on control line 300 kg

Article No.	Type	SWL kg	BL kg	Sheave size mm	Sheave type	Max rope mm	Length mm	Slide type	Weight g	Track mm
Delrin Balls										
02300	Genoa car with stop	900	1800	44 x 22.5	Aluminium ball bearing	18	120	Delrin Balls	426	22
02303	Genoa car with eye	900	1800	44 x 22.5	Aluminium ball bearing	18	125	Delrin Balls	418	22
02305	Genoa car with block	1000	2000	44 x 22.5	Aluminium ball bearing	18	155	Delrin Balls	495	22
02307	Genoa car with double block	1000	2000	44 x 22.5	Aluminium ball bearing	18	155	Delrin Balls	520	22
Delrin Rods										
02301	Genoa car with stop	1000	2000	44 x 22.5	Aluminium ball bearing	18	120	Delrin Rods	426	22
02304	Genoa car with eye	1000	2000	44 x 22.5	Aluminium ball bearing	18	125	Delrin Rods	418	22
02306	Genoa car with block	1200	2400	44 x 22.5	Aluminium ball bearing	18	155	Delrin Rods	495	22
02308	Genoa car with double block	1200	2400	44 x 22.5	Aluminium ball bearing	18	155	Delrin Rods	520	22

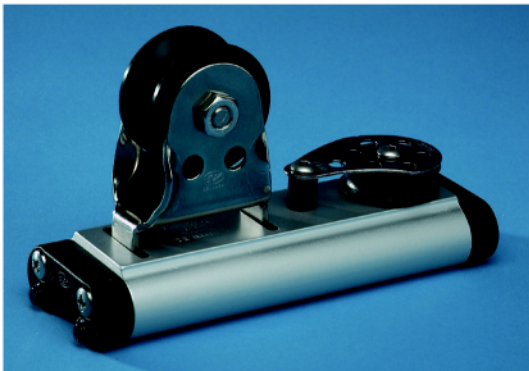
Choose the 22 mm travellers with recirculating balls if you want to adjust the sheet angle, even under heavy loads, and the slide rods travellers if you want a higher safe working load (SWL).



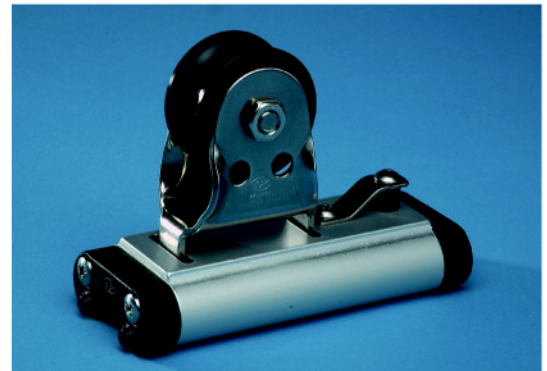
No. 02277
No. 02278



No. 02279
No. 02280



No. 02290
No. 02295



No. 02291
No. 02296

Genoa car features:

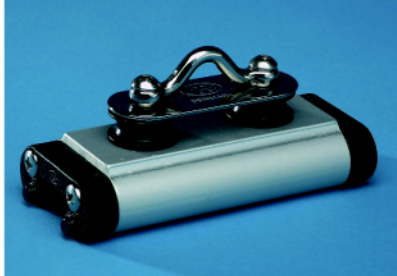
Car body in aluminium (6082 T6)
Anodised minimum 25 my
Available in natural or black colour

End caps in black delrin
Polished stainless steel 316 stirrup,
pivots 45 degrees to each side
with black delrin plan bearing sheave

Control blocks in stainless steel 316
with black delrin plan bearing
sheave 35 x 10 mm
Max rope diameter 8 mm
SWL on control line 300 kg

Article No.	Type	SWL kg	BL kg	Sheave size mm	Sheave type	Max rope mm	Length mm	Slide type	Weight g	Track mm
Delrin Balls										
02278	Genoa car with stop	900	1800	44 x 22.5	Delrin plan bearing	18	120	Delrin Balls	401	22
02280	Genoa car with double block	1000	2000	44 x 22.5	Delrin plan bearing	18	155	Delrin Balls	500	22
02295	Genoa car with block	1000	2000	44 x 22.5	Delrin plan bearing	18	155	Delrin Balls	475	22
02296	Genoa car with eye	900	1800	44 x 22.5	Delrin plan bearing	18	125	Delrin Balls	396	22
Delrin Rods										
02277	Genoa car with stop	1000	2000	44 x 22.5	Delrin plan bearing	18	120	Delrin Rods	401	22
02279	Genoa car with double block	1200	2400	44 x 22.5	Delrin plan bearing	18	155	Delrin Rods	500	22
02290	Genoa car with block	1200	2400	44 x 22.5	Delrin plan bearing	18	155	Delrin Rods	475	22
02291	Genoa car with eye	1000	2000	44 x 22.5	Delrin plan bearing	18	125	Delrin Rods	396	22

Choose the 22 mm travellers with recirculating balls if you want to adjust the sheet angle, even under heavy loads, and the slide rods travellers if you want a higher safe working load (SWL).



No. 02249
No. 02250



No. 02254
No. 02255



No. 02260
No. 02261



No. 02263
No. 02264



No. 02256
No. 02257



No. 02258
No. 02259

Car features:

Car body in aluminium (6082 T6)
Anodised minimum 25 my
Available in natural or black colour

End caps in black delrin
Polished stainless steel 316 eye
pivots 45 degrees to each side

Control blocks in stainless steel 316
with black delrin plan bearing
sheave 35 x 10 mm
Max rope diameter 8 mm
SWL on control blocks 300 kg

Article No.	Type	SWL kg	BL kg	Sheave size mm	Sheave type	Max rope mm	Length mm	Slide type	Weight g	Track mm
Delrin Balls										
02250	Mainsheet car with eye and blocks	900	1800	25 x 10	Delrin plan bearing	8	120	Delrin Balls	287	22
02254	Car with shackle	900	1800				125	Delrin Balls	239	22
02256	Car with shackle	425	850				80	Delrin Balls	159	22
02258	Car with shackle and adjustable stop	525	1050				95	Delrin Balls	208	22
02260	Outhaulcar with block	900	1800	35 x 10	Delrin plan bearing	8	125	Delrin Balls	275	22
02264	Outhaulcar with double block	900	1800	35 x 10	Delrin plan bearing	8	125	Delrin Balls	300	22
Delrin Rods										
02249	Mainsheet car with eye and blocks	1000	2000	25 x 10	Delrin plan bearing	8	120	Delrin Rods	401	22
02255	Car with shackle	1000	2000				125	Delrin Rods	500	22
02257	Car with shackle	500	1000				80	Delrin Rods	475	22
02259	Car with shackle and adjustable stop	625	1250				95	Delrin Rods	396	22
02261	Outhaulcar with block	1000	2000	35 x 10	Delrin plan bearing	8	125	Delrin Rods	426	22
02263	Outhaulcar with double block	1000	2000	35 x 10	Delrin plan bearing	8	125	Delrin Rods	418	22

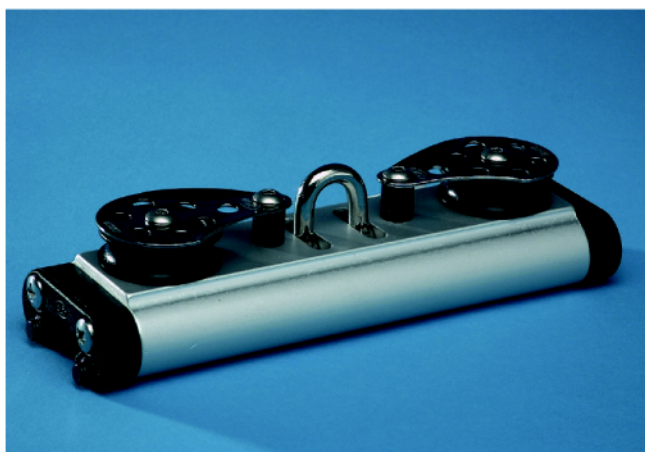
Choose the 22 mm travellers with recirculating balls if you want to adjust the sheet angle, even under heavy loads, and the slide rods travellers if you want a higher safe working load (SWL).



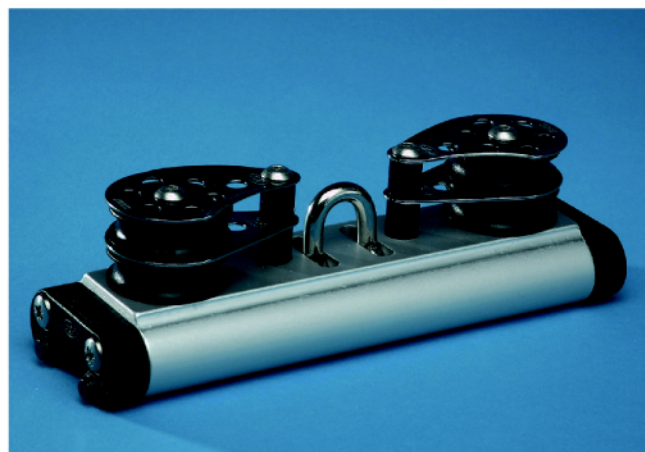
No. 02281
No. 02282



No. 02283
No. 02284



No. 02285
No. 02286



No. 02287
No. 02288

Car features:

Car body in aluminium (6082 T6)
Anodised minimum 25 my
Available in natural or black colour

End caps in black delrin
6 mm eye in polished stainless steel 316
pivots 45 degrees to each side
Cam cleats are adjustable in 3 positions

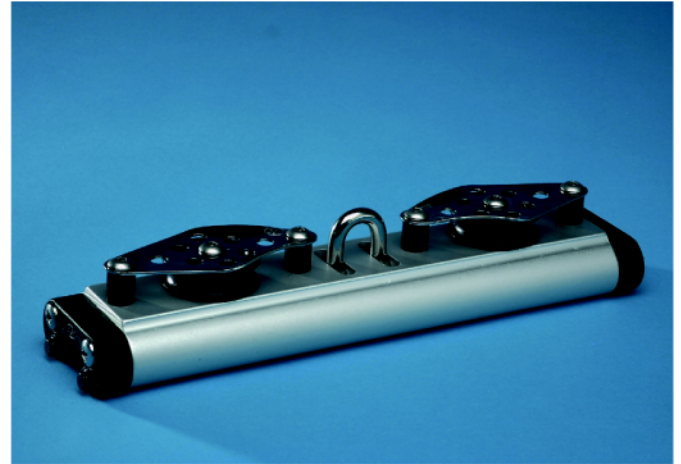
Control blocks in stainless steel 316
with black delrin plan bearing
sheave 35 x 10 mm
Max rope diameter 8 mm
SWL on control blocks 300 kg

Article No.	Type	SWL kg	BL kg	Sheave size mm	Sheave type	Max rope mm	Length mm	Slide type	Weight g	Track mm
Delrin Balls										
02282	Mainsheet car with double blocks, becket and cam cleats	1000	2000	35 x 10	Delrin plan bearing	8	225	Delrin Balls	745	22
02284	Mainsheet car with blocks, becket and cam cleats	1000	2000	35 x 10	Delrin plan bearing	8	225	Delrin Balls	700	22
02286	Mainsheet car with blocks	1000	2000	35 x 10	Delrin plan bearing	8	180	Delrin Balls	396	22
02288	Mainsheet car with double blocks	1000	2000	35 x 10	Delrin plan bearing	8	180	Delrin Balls	445	22
Delrin Rods										
02281	Mainsheet car with double blocks, becket and cam cleats	1200	2400	35 x 10	Delrin plan bearing	8	225	Delrin Rods	745	22
02283	Mainsheet car with blocks, becket and cam cleats	1200	2400	35 x 10	Delrin plan bearing	8	225	Delrin Rods	700	22
02285	Mainsheet car with blocks	1200	2400	35 x 10	Delrin plan bearing	8	180	Delrin Rods	396	22
02287	Mainsheet car with double blocks	1200	2400	35 x 10	Delrin plan bearing	8	180	Delrin Rods	445	22

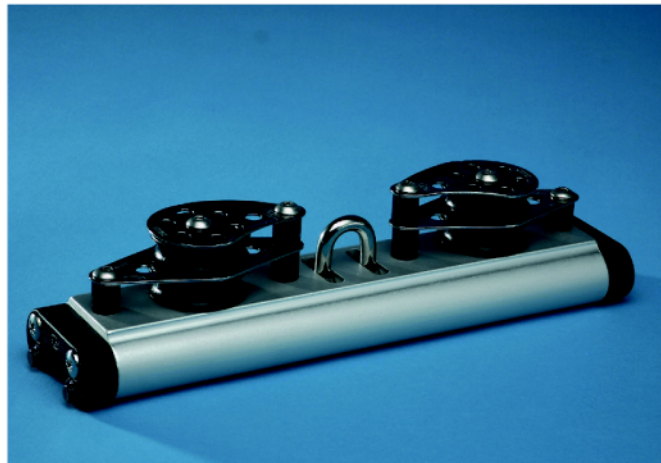
Choose the 22 mm travellers with recirculating balls if you want to adjust the sheet angle, even under heavy loads, and the slide rods travellers if you want a higher safe working load (SWL).



No. 02294
No. 02299



No. 02313
No. 02314



No. 02317
No. 02318

Car features:

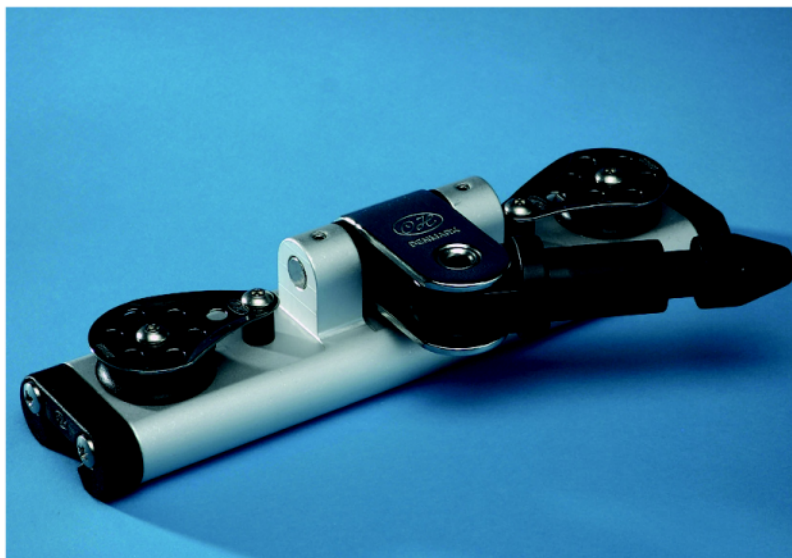
Car body in aluminium (6082 T6)
Anodised minimum 25 my
Available in natural or black colour

End caps in black delrin
6 mm eye in polished stainless steel 316
pivots 45 degrees to each side
Cam cleats are adjustable i 3 positions

Control blocks in stainless steel 316
with black delrin plan bearing
sheave 35 x 10 mm
Max rope diameter 8 mm
SWL on control blocks 300 kg

Article No.	Type	SWL kg	BL kg	Sheave size mm	Sheave type	Max rope mm	Length mm	Slide type	Weight g	Track mm
Delrin Balls										
02299	Mainsheet car with blocks and cam cleat	1000	2000	35 x 10	Delrin plan bearing	8	180	Delrin Balls	583	22
02314	Mainsheet car with blocks and becket	1000	2000	35 x 10	Delrin plan bearing	8	225	Delrin Balls	510	22
02318	Mainsheet car with double blocks and becket	1000	2000	35 x 10	Delrin plan bearing	8	225	Delrin Balls	557	22
Delrin Rods										
02294	Mainsheet car with blocks and cam cleat	1200	2400	35 x 10	Delrin plan bearing	8	180	Delrin Rods	583	22
02313	Mainsheet car with blocks and becket	1200	2400	35 x 10	Delrin plan bearing	8	225	Delrin Rods	510	22
02317	Mainsheet car with double blocks and becket	1200	2400	35 x 10	Delrin plan bearing	8	225	Delrin Rods	557	22

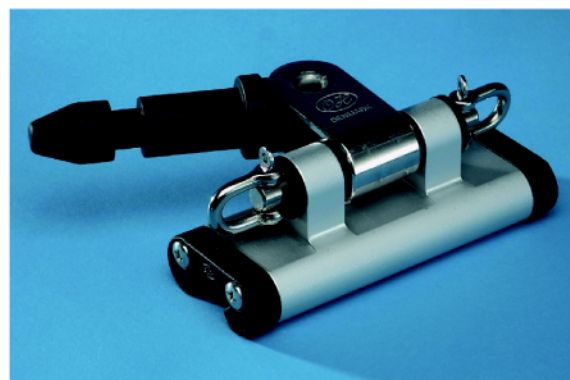
Choose the 22 mm travellers with recirculating balls if you want to adjust the pole angle, even under heavy loads, and the slide rods travellers if you want a higher safe working load (SWL).



No. 02275
No. 02276



No. 02311
No. 02312



No. 02293
No. 02298

See page 42 for pole ends

Car features:

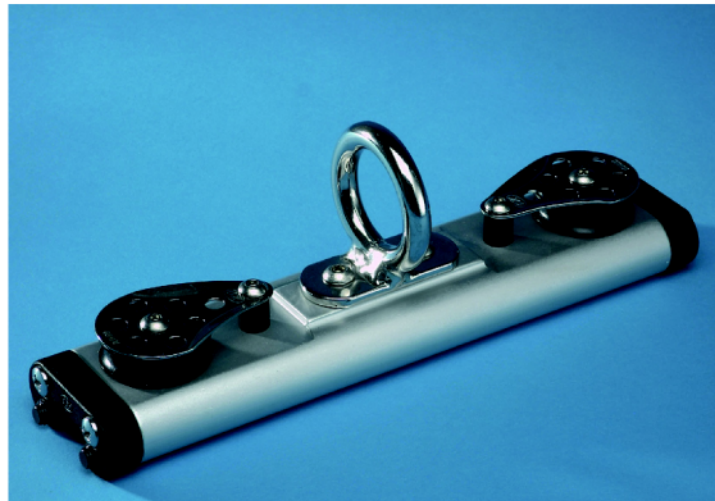
Car body in aluminium (6082 T6)
Anodised minimum 25 my
Available in natural or black colour

End caps in black delrin
21.5 mm bajonet in aluminium
and polished stainless steel 316
pivots 95 degrees to each side

Control blocks in stainless steel 316
with black delrin plan bearing
sheave 35 x 10 mm
Max rope diameter 8 mm
SWL on control line 300 kg

Article No.	Type	SWL kg	BL kg	Sheave size mm	Sheave type	Max rope mm	Length mm	Slide type	Weight g	Track mm
Delrin Balls										
02276	Spinnaker car with blocks and 21.5 mm bajonet for pole end	1275	2550	35 x 10	Delrin plan bearing	8	225	Delrin Balls	742	22
02298	Spinnaker car with shackles and 21.5 mm bajonet for pole end	950	1900			8	135	Delrin Balls	580	22
02312	Spinnaker car with stop and 21.5 mm bajonet for pole end	900	1800				125	Delrin Balls		22
Delrin Rods										
02275	Spinnaker car with blocks and 21.5 mm bajonet for pole end	1500	3000	35 x 10	Delrin plan bearing	8	225	Delrin Rods	742	22
02293	Spinnaker car with shackles and 21.5 mm bajonet for pole end	1050	2100			8	135	Delrin Rods	580	22
02311	Spinnaker car with stop and 21.5 mm bajonet for pole end	1000	2000				125	Delrin Rods		22

Choose the 22 mm travellers with recirculating balls if you want to adjust the pole angle, even under heavy loads, and the slide rods travellers if you want a higher safe working load (SWL).



No. 02309
No. 02310



No. 02265
No. 02266



No. 02289
No. 02297

Car features:

Car body in aluminium (6082 T6)
Anodised minimum 25 my
Available in natural or black colour

End caps in black delrin
Ring (32 x 40 mm) in polished
stainless steel 316

Control blocks in stainless steel 316
with black plan bearing
sheave 35 x 10 mm
Max rope diameter 8 mm
SWL on control blocks 300 kg

Article No.	Type	SWL kg	BL kg	Sheave size mm	Sheave type	Max rope mm	Length mm	Slide type	Weight g	Track mm
Delrin Balls										
02266	Spinnaker car with ring (inside 32 mm) and stop	900	1800				125	Delrin Balls	354	22
02297	Spinnaker car with ring (inside 32 mm) and 5 mm shackles	900	1800			8	125	Delrin Balls	358	22
02310	Spinnaker car with ring (inside 32 mm) and blocks	1100	2200	35 x 10	Delrin plan bearing	8	200	Delrin Balls	542	22
Delrin Rods										
02265	Spinnaker car with ring (inside 32 mm) and stop	1000	2000				125	Delrin Rods	354	22
02289	Spinnaker car with ring (inside 32 mm) and 5 mm shackles	1000	2000			8	125	Delrin Rods	358	22
02309	Spinnaker car with ring (inside 32 mm) and blocks	1300	2600	35 x 10	Delrin plan bearing	8	200	Delrin Rods	542	22

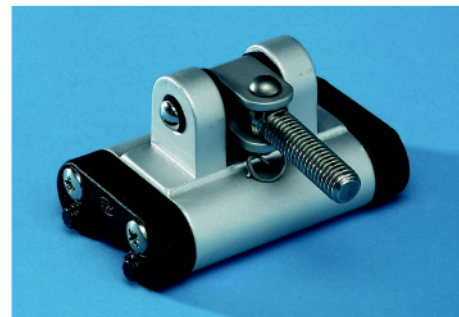
Choose the 22 mm travellers with recirculating balls if you want to adjust the main sail, even under heavy loads, and the slide rods travellers if you want a higher safe working load (SWL).



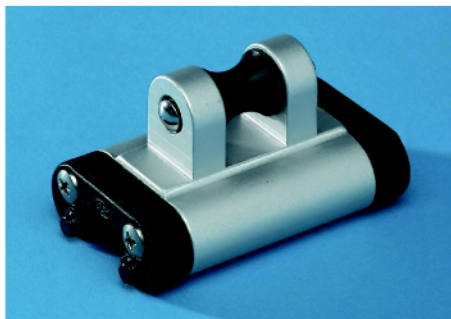
No. 02327
No. 02328
No. 02330
No. 02331



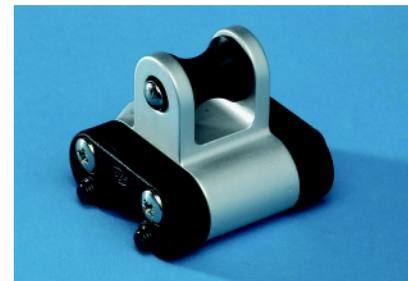
No. 02334
No. 02335



No. 02332
No. 02333



No. 02338
No. 02339



No. 02336
No. 02337

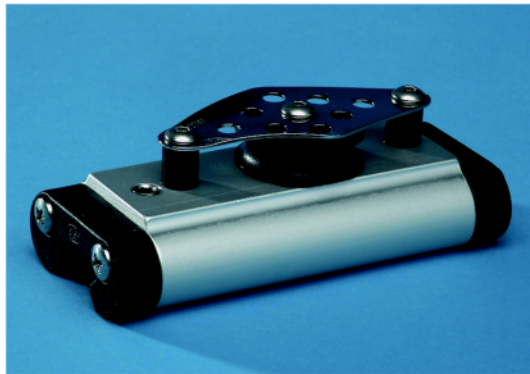
Car features:

Car body in aluminium (6082 T6)
Anodised minimum 25 my
Available in natural or black colour

End caps in black delrin
Toggle and thread in aluminium
Anodised minimum 25 my

See page 30 for Tracks
and mast groove slugs

Article No.	Type	SWL kg	BL kg	A mm	B mm	Width mm	Length mm	Slide type	Weight g	Track mm
Delrin Balls										
02328	Headboard car STRONG with stainless steel holder for headboard	1250	2500			51	205	Delrin Balls	865	22
02330	Headboard car with stainless steel holder for headboard	1000	2000	38	76	51	205	Delrin Balls	655	22
02332	Batten car with toggle and M10 mm tread for retainer	500	1000	38	59	51	90	Delrin Balls	217	22
02334	Batten car with toggle and M10 mm tread for retainer	325	650	38	59	51	60	Delrin Balls	150	22
02336	Webbing car	325	650	38	48.5	51	60	Delrin Balls	118	22
02338	Webbing car STRONG	500	1000	38	48.5	51	90	Delrin Balls	184	22
Delrin Rods										
02327	Headboard car STRONG with stainless steel holder for headboard	1375	2750			51	205	Delrin Rods	865	22
02331	Headboard car with stainless steel holder for headboard	1100	2200	38	76	51	205	Delrin Rods	655	22
02333	Batten car with toggle and M10 mm tread for retainer	600	1200	38	59	51	90	Delrin Rods	217	22
02335	Batten car with toggle and M10 mm tread for retainer	400	800	38	59	51	60	Delrin Rods	150	22
02337	Webbing car	400	800	38	48.5	51	60	Delrin Rods	118	22
02339	Webbing car STRONG	600	1200	38	48.5	51	90	Delrin Rods	184	22


 No. 02251
 No. 02253


No. 02272



No. 02271



No. 02270



No. 02268

Car features:

Car body in aluminium (6082 T6)
 Anodised minimum 25 my
 Available in natural or black colour

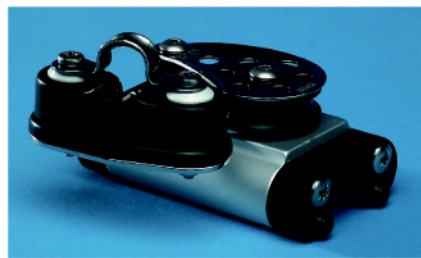
End caps in black delrin
 8 mm Pinol screw, ables
 you to lock it to the track
 Cam cleats are adjustable in 3 positions

Control blocks in stainless steel 316
 with black delrin plan bearing
 sheave 35 x 10 mm
 Max rope diameter 8 mm
 Max SWL on control line 300 kg

Article No.	Type	SWL kg	BL kg	Sheave size mm	Sheave type	Max rope mm	Length mm	Slide type	Weight g	Track mm
Delrin Balls										
02251	Stop adjustable	300	600				55	Delrin Balls	113	22
Delrin Rods										
02253	Stop adjustable	300	600				55	Delrin Rods	113	22
02267	Control block double with becket and cam cleat (Starboard)	300	600	35 x 10	Delrin plan bearing	8	120	Locked	380	22
02268	Control block double with becket and cam cleat (Port)	300	600	35 x 10	Delrin plan bearing	8	120	Locked	380	22
02269	Control block with becket and cam cleat (Starboard)	300	600	35 x 10	Delrin plan bearing	8	120	Locked	355	22
02270	Control block with becket and cam cleat (Port)	300	600	35 x 10	Delrin plan bearing	8	120	Locked	355	22
02271	Control block double with becket	300	600	35 x 10	Delrin plan bearing	8	120	Locked	284	22
02272	Control block with becket	300	600	35 x 10	Delrin plan bearing	8	120	Locked	260	22



No. 02315



No. 02319



No. 02316



No. 02321

Car features:

Car body in aluminium (6082 T6)
Anodised minimum 25 my
Available in natural or black colour

End caps in black delrin
8 mm Pinol screw, ables
you to lock it to the track
Cam cleats are adjustable in 3 positions

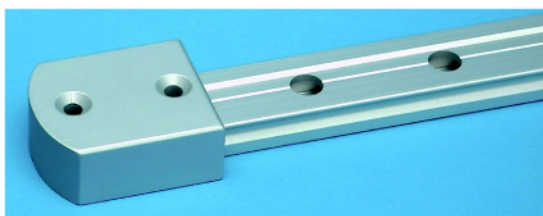
Control blocks in stainless steel 316
with black delrin plan bearing
sheave 35 x 10 mm
Max rope diameter 8 mm
Max SWL on control line 300 kg

Article No.	Type	SWL kg	BL kg	Sheave size mm	Sheave type	Max rope mm	Length mm	Slide type	Weight g	Track mm
Delrin Rods										
02315	Control block	300	600	35 x 10	Delrin plan bearing	8	85	Locked	185	22
02316	Control block double	300	600	35 x 10	Delrin plan bearing	8	85	Locked	210	22
02319	Control block with cam cleat (Port)	300	600	35 x 10	Delrin plan bearing	8	85	Locked	280	22
02320	Control block with cam cleat (Starboard)	300	600	35 x 10	Delrin plan bearing	8	85	Locked	280	22
02321	Control block double with cam cleat (Port)	300	600	35 x 10	Delrin plan bearing	8	85	Locked	305	22
02322	Control block double with cam cleat (Starboard)	300	600	35 x 10	Delrin plan bearing	8	85	Locked	305	22

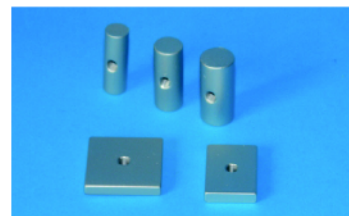


Track features:

Track in aluminium (6082 T6)
Anodised minimum 25 my
Available in natural or black colour



No. 03309



Mast groove slugs

Article No.	Type	Length m	Width mm	Height mm	Hole pitch mm	Fasteners mm	Weight g
03320	22 mm Track	1.0	22	13	50	5	465
03321	22 mm Track	1.5	22	13	50	5	698
03322	22 mm Track	2.0	22	13	50	5	930
03323	22 mm Track	2.5	22	13	50	5	1163
03324	22 mm Track	3.0	22	13	50	5	1395
03325	22 mm Track	4.0	22	13	50	5	1860
03326	22 mm Track	5.0	22	13	50	5	2325
03327	22 mm Track	6.0	22	13	50	5	2790
03302	Delrin end cap for 22 mm track	26 mm	26	14.5		5	12
03309	Alu end stop for 22 mm track	45 mm	30	20			40
03370	22 mm track assembly	40 mm	8	5			4
03374	Mast groove slug for 22 mm track	30 mm	Ø 14			5	
03375	Mast groove slug for 22 mm track	30 mm	Ø 10			5	
03376	Mast groove slug for 22 mm track	30 mm	Ø 12			5	
03377	Mast groove slug for 22 mm track	30 mm	25	5		5	
03390	Mast groove slug for 22 mm track	20 mm	30	5		5	
03391	Mast groove slug for 22 mm track	30 mm	30	5		5	
03392	Mast groove slug for 22 mm track	30 mm	30	6		5	

Choose the 30 mm travellers with recirculating balls if you want to adjust the sheet angle, even under heavy loads, and the slide rods travellers if you want a higher safe working load (SWL).



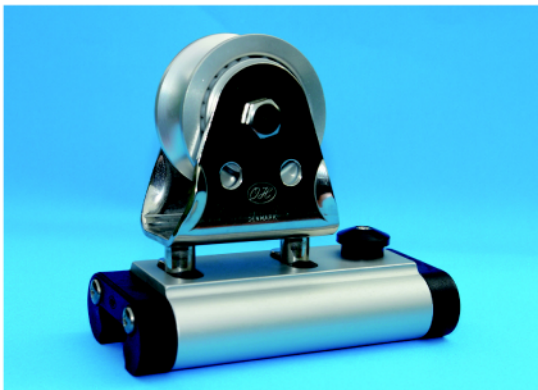
No. 03160

Reefing car features:

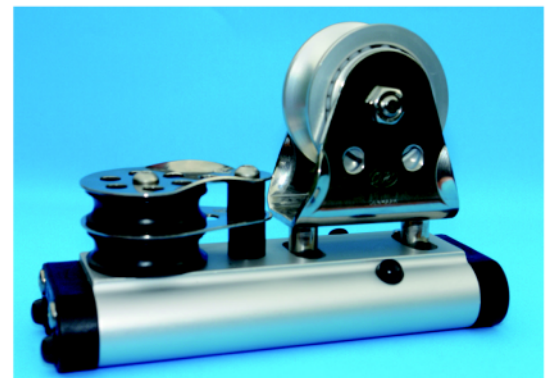
Car body in aluminium (6082 T6)
 Anodised minimum 25 my
 Available in natural or black colour
 End caps in black delrin
 Block side in stainless steel 316
 with black delrin plan bearing
 sheaves

How to mount the reefing car

Article No.	Type	SWL kg	BL kg	Sheave size mm	Sheave type	Max rope mm	Length mm	Slide type	Weight g	Track mm
03160	One line reefing car 30 mm	1200	2400	45 x 12	Delrin plan bearing	12	155	Delrin balls	470	30


 No. 03100
 No. 03101

 No. 03103
 No. 03104

 No. 03105
 No. 03106

 No. 03107
 No. 03108

Genoa car features:

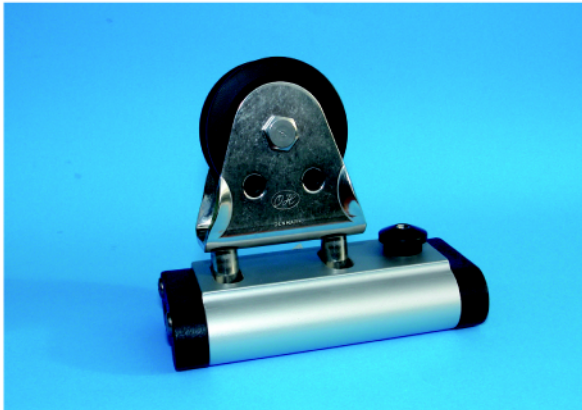
Car body in aluminium (6082 T6)
 Anodised minimum 25 my
 Available in natural or black colour

End caps in black delrin
 Polished stainless steel 316 stirrup,
 pivots 45 degrees to each side
 with aluminium ball bearing sheave
 (4 rows of balls)

Control blocks in stainless steel 316
 with black delrin plan bearing
 sheave 45 x 12 mm
 Max rope diameter 10 mm
 SWL on control line 500 kg

Article No.	Type	SWL kg	BL kg	Sheave size mm	Sheave type	Max rope mm	Length mm	Slide type	Weight g	Track mm
Delrin Balls										
03100	Genoa car with stop	2000	4000	60 x 33	Aluminium ball bearing	16	160	Delrin Balls		30
03103	Genoa car with eye	2000	4000	60 x 33	Aluminium ball bearing	16	160	Delrin Balls		30
03105	Genoa car with block	2150	4300	60 x 33	Aluminium ball bearing	16	180	Delrin Balls		30
03107	Genoa car with double block	2150	4300	60 x 33	Aluminium ball bearing	16	180	Delrin Balls		30
Delrin Rods										
03101	Genoa car with stop	2300	4600	60 x 33	Aluminium ball bearing	16	160	Delrin Rods		30
03104	Genoa car with eye	2500	5000	60 x 33	Aluminium ball bearing	16	180	Delrin Rods		30
03106	Genoa car with block	2500	5000	60 x 33	Aluminium ball bearing	16	180	Delrin Rods		30
03108	Genoa car with double block	2300	4600	60 x 33	Aluminium ball bearing	16	160	Delrin Rods		30

Choose the 30 mm travellers with recirculating balls if you want to adjust the sheet angle, even under heavy loads, and the slide rods travellers if you want a higher safe working load (SWL).



No. 03077
No. 03078



No. 03079
No. 03080



No. 03090
No. 03095



No. 03091
No. 03096

Genoa car features:

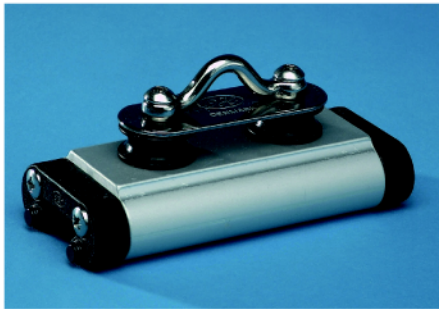
Car body in aluminium (6082 T6)
Anodised minimum 25 my
Available in natural or black colour

End caps in black delrin
Polished stainless steel 316 stirrup,
pivots 45 degrees to each side
with black delrin plan bearing sheave

Control blocks in stainless steel 316
with black delrin plan bearing
sheave 45 x 12 mm
Max rope diameter 10 mm
SWL on control line 500 kg

Article No.	Type	SWL kg	BL kg	Sheave size mm	Sheave type	Max rope mm	Length mm	Slide type	Weight g	Track mm
Delrin Balls										
03078	Genoa car with stop	2000	4000	60 x 33	Delrin plan bearing	16	160	Delrin Balls	700	30
03080	Genoa car with double block	2150	4300	60 x 33	Delrin plan bearing	16	180	Delrin Balls		30
03095	Genoa car with block	2150	4300	60 x 33	Delrin plan bearing	16	180	Delrin Balls		30
03096	Genoa car with eye	2000	4000	60 x 33	Delrin plan bearing	16	160	Delrin Balls		30
Delrin Rods										
03077	Genoa car with stop	2300	4600	60 x 33	Delrin plan bearing	16	160	Delrin Rods	700	30
03079	Genoa car with double block	2500	5000	60 x 33	Delrin plan bearing	16	180	Delrin Rods		30
03090	Genoa car with block	2500	5000	60 x 33	Delrin plan bearing	16	180	Delrin Rods		30
03091	Genoa car with eye	2300	4600	60 x 33	Delrin plan bearing	16	160	Delrin Rods		30

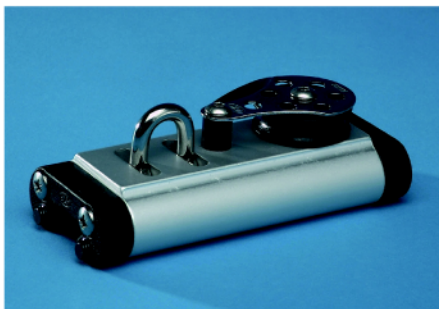
Choose the 30 mm travellers with recirculating balls if you want to adjust the sheet angle, even under heavy loads, and the slide rods travellers if you want a higher safe working load (SWL).



No. 03049
No. 03050



No. 03054 / 03055 / 03056 / 03057



No. 03060
No. 03061



No. 03063
No. 03064



No. 03058
No. 03059

Car features:

Car body in aluminium (6082 T6)
Anodised minimum 25 my
Available in natural or black colour

End caps in black delrin
8 mm eye in polished stainless steel 316
pivots 45 degrees to each side

Control blocks in stainless steel 316
with black delrin plan bearing
sheave 45 x 12 mm
Max rope diameter 10 mm
SWL on control blocks 500 kg

Article No.	Type	SWL kg	BL kg	Sheave size mm	Sheave type	Max rope mm	Length mm	Slide type	Weight g	Track mm
Delrin Balls										
03050	Mainsheet car with eye and blocks	1800	3600	32 x 12	Delrin plan bearing	10	135	Delrin Balls		30
03054	Car with shackle	1800	3600				135	Delrin Balls	400	30
03056	Car with shackle	1300	2600				95	Delrin Balls	290	30
03058	Car with shackle and adjustable stop	1800	3600				135	Delrin Balls		30
03060	Outhaulcar with block	2000	4000	45 x 12	Delrin plan bearing	10	160	Delrin Balls	500	30
03064	Outhaulcar with double block	2000	4000	45 x 12	Delrin plan bearing	10	160	Delrin Balls		30
Delrin Rods										
03049	Mainsheet car with eye and blocks	2000	4000	32 x 12	Delrin plan bearing	10	135	Delrin Rods		30
03055	Car with shackle	2000	4000				135	Delrin Rods	400	30
03057	Car with shackle	1400	2800				95	Delrin Rods	290	30
03059	Car with shackle and adjustable stop	2000	4000				135	Delrin Rods		30
03061	Outhaulcar with block	2400	4800	45 x 12	Delrin plan bearing	10	160	Delrin Rods	500	30
03063	Outhaulcar with double block	2400	4800	45 x 12	Delrin plan bearing	10	160	Delrin Rods		30

Choose the 30 mm travellers with recirculating balls if you want to adjust the sheet angle, even under heavy loads, and the slide rods travellers if you want a higher safe working load (SWL).



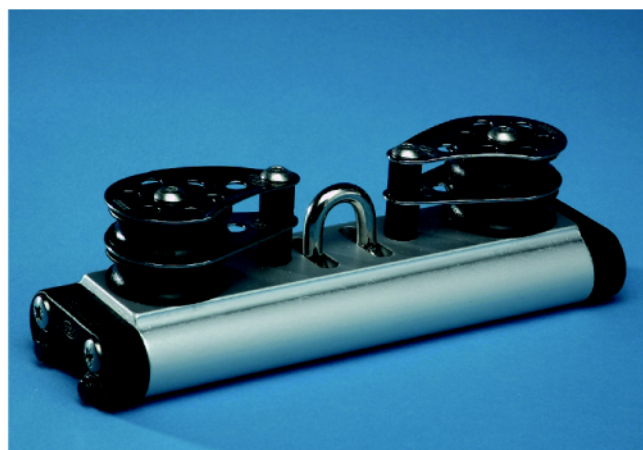
No. 03081
No. 03082



No. 03083
No. 03084



No. 03085
No. 03086



No. 03087
No. 03088

Car features:

Car body in aluminium (6082 T6)
Anodised minimum 25 my
Available in natural or black colour

End caps in black delrin
8 mm eye in polished stainless steel 316
pivots 45 degrees to each side
Cam cleats are adjustable in 3 positions

Control blocks in stainless steel 316
with black delrin plan bearing
sheave 45 x 12 mm
Max rope diameter 10 mm
SWL on control blocks 500 kg

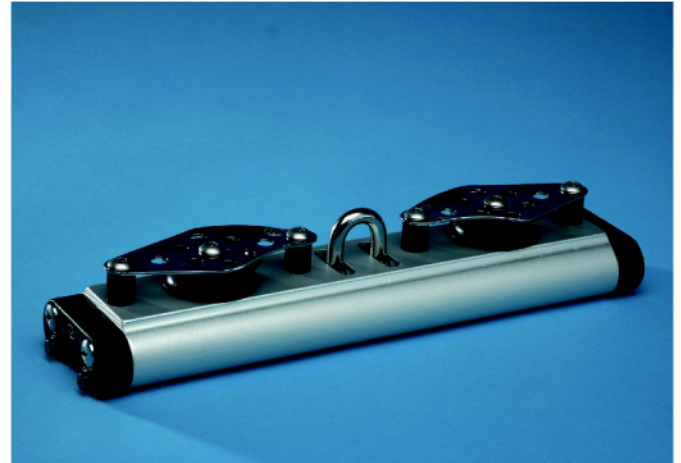
Article No.	Type	SWL kg	BL kg	Sheave size mm	Sheave type	Max rope mm	Length mm	Slide type	Weight g	Track mm
Delrin Balls										
03082	Mainsheet car with double blocks, becket and cam cleats	2200	4400	45 x 12	Delrin plan bearing	10	280	Delrin Balls		30
03084	Mainsheet car with blocks, becket and cam cleats	2200	4400	45 x 12	Delrin plan bearing	10	280	Delrin Balls		30
03086	Mainsheet car with blocks	2200	4400	45 x 12	Delrin plan bearing	10	230	Delrin Balls		30
03088	Mainsheet car with double blocks	2200	4400	45 x 12	Delrin plan bearing	10	230	Delrin Balls		30
Delrin Rods										
03081	Mainsheet car with double blocks, becket and cam cleats	2600	5200	45 x 12	Delrin plan bearing	10	280	Delrin Rods		30
03083	Mainsheet car with blocks, becket and cam cleats	2600	5200	45 x 12	Delrin plan bearing	10	280	Delrin Rods		30
03085	Mainsheet car with blocks	2600	5200	45 x 12	Delrin plan bearing	10	230	Delrin Rods		30
03087	Mainsheet car with double blocks	2600	5200	45 x 12	Delrin plan bearing	10	230	Delrin Rods		30



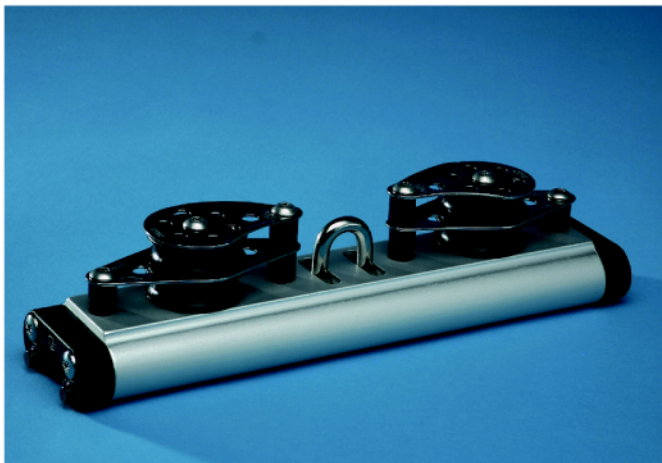
Choose the 30 mm travellers with recirculating balls if you want to adjust the sheet angle, even under heavy loads, and the slide rods travellers if you want a higher safe working load (SWL).



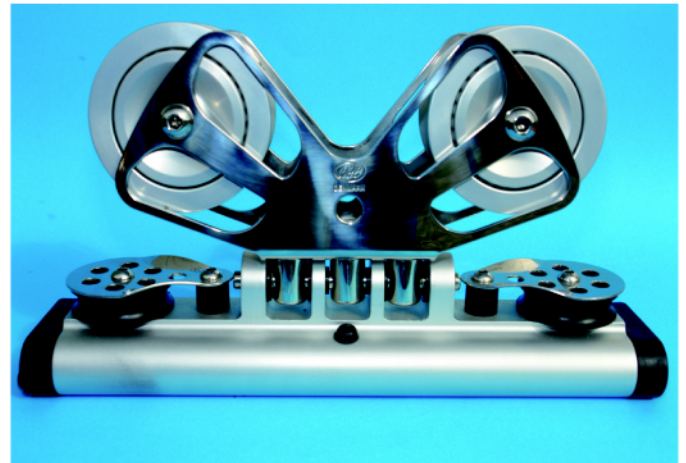
No. 03094
No. 03099



No. 03113
No. 03114



No. 03117
No. 03118



No. 03145
No. 03146

Car features:

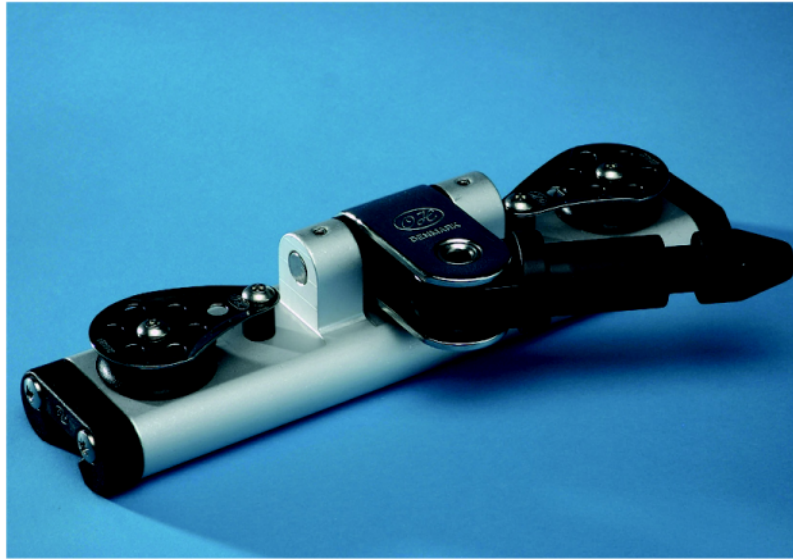
Car body in aluminium (6082 T6)
Anodised minimum 25 my
Available in natural or black colour

End caps in black delrin
8 mm eye in polished stainless steel 316
pivots 45 degrees to each side
Cam cleats are adjustable i 3 positions

Control blocks in stainless steel 316
with black delrin plan bearing
sheave 45 x 12 mm
Max rope diameter 10 mm
SWL on control blocks 500 kg

Article No.	Type	SWL kg	BL kg	Sheave size mm	Sheave type	Max rope mm	Length mm	Slide type	Weight g	Track mm
Delrin Balls										
03099	Mainsheet car with blocks and cam cleat	2200	4400	45 x 12	Delrin plan bearing	10	230	Delrin Balls		30
03114	Mainsheet car with blocks and becket	2200	4400	45 x 12	Delrin plan bearing	10	280	Delrin Balls	835	30
03118	Mainsheet car with double blocks and becket	2200	4400	45 x 12	Delrin plan bearing	10	280	Delrin Balls	930	30
03146	Mainsheet car with blocks	3000	6000	75 x 33	Aluminium ball bearing	16	280	Delrin Balls	1600	30
Delrin Rods										
03094	Mainsheet car with blocks and cam cleat	2600	5200	45 x 12	Delrin plan bearing	10	230	Delrin Rods		30
03113	Mainsheet car with blocks and becket	2600	5200	45 x 12	Delrin plan bearing	10	280	Delrin Rods	835	30
03117	Mainsheet car with double blocks and becket	2600	5200	45 x 12	Delrin plan bearing	10	280	Delrin Rods	930	30
03145	Mainsheet car with blocks	3000	6000	75 x 33	Aluminium ball bearing	16	280	Delrin Rods	1600	30

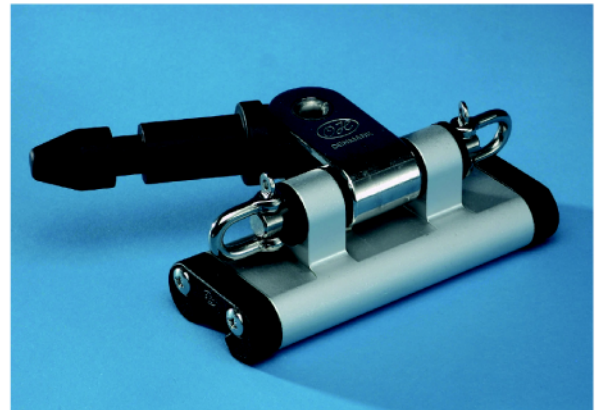
Choose the 30 mm travellers with recirculating balls if you want to adjust the pole angle, even under heavy loads, and the slide rods travellers if you want a higher safe working load (SWL).



No. 03073 / 03074 / 03075 / 03076



No. 03111 / 03112 / 03149 / 03150



No. 03093 / 03098 / 03147 / 03148

See page 42 for pole ends

Car features:

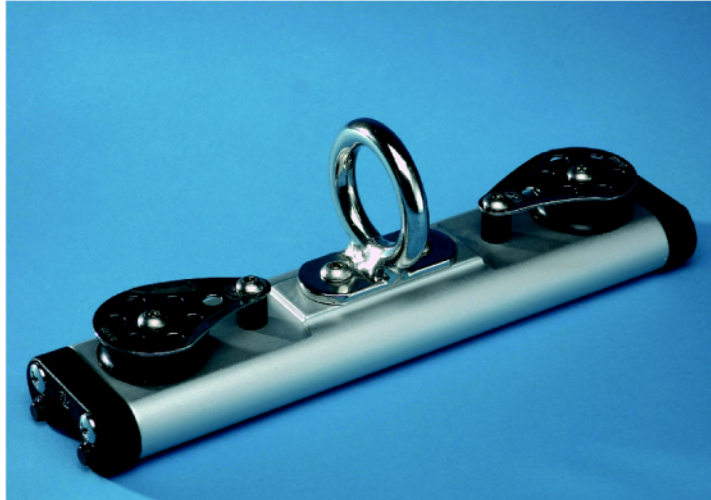
Car body in aluminium (6082 T6)
Anodised minimum 25 my
Available in natural black colour

End caps in black delrin
21.5/27 mm bajonet in aluminium
and polished stainless steel 316
pivots 95 degrees to each side

Control blocks in stainless steel 316
with black delrin plan bearing
sheave 45 x 12 mm
Max rope diameter 10 mm
SWL on control line 500 kg

Article No.	Type	SWL kg	BL kg	Sheave size mm	Sheave type	Max rope mm	Length mm	Slide type	Weight g	Track mm
Delrin Balls										
03074	Spinnaker car with blocks and 27 mm bajonet for pole end	2750	5500	45 x 12	Delrin plan bearing	10	265	Delrin Balls	1293	30
03076	Spinnaker car with blocks and 21.5 mm bajonet for pole end	2400	4800	45 x 12	Delrin plan bearing	10	250	Delrin Balls		30
03098	Spinnaker car with shackles and 21.5 mm bajonet for pole end	1800	3600			10	140	Delrin Balls		30
03148	Spinnaker car with shackles and 27 mm bajonet for pole end	2000	4000				160	Delrin Balls		30
03112	Spinnaker car with stop and 21.5 mm bajonet for pole end	1800	3600				155	Delrin Balls	780	30
03150	Spinnaker car with stop and 27 mm bajonet for pole end	2000	4000				160	Delrin Balls		30
Delrin Rods										
03073	Spinnaker car with blocks and 27 mm bajonet for pole end	3200	6400	45 x 12	Delrin plan bearing	10	265	Delrin Rods	1293	30
03075	Spinnaker car with blocks and 21.5 mm bajonet for pole end	2800	5600	45 x 12	Delrin plan bearing	10	250	Delrin Rods		30
03093	Spinnaker car with shackles and 21.5 mm bajonet for pole end	1800	3600			10	140	Delrin Rods		30
03147	Spinnaker car with shackles and 27 mm bajonet for pole end	2000	4000				160	Delrin Rods		30
03111	Spinnaker car with stop and 21.5 mm bajonet for pole end	2000	4000				155	Delrin Rods	780	30
03149	Spinnaker car with stop and 27 mm bajonet for pole end	2000	4000				160	Delrin Rods		30

Choose the 30 mm travellers with recirculating balls if you want to adjust the pole angle, even under heavy loads, and the slide rods travellers if you want a higher safe working load (SWL).



No. 03109
No. 03110



No. 03065
No. 03066



No. 03089
No. 03097

Car features:

Car body in aluminium (6082 T6)
Anodised minimum 25 my
Available in natural or black colour

End caps in black delrin
Ring (40 x 50 mm) in polished
stainless steel 316

Control blocks in stainless steel 316
with black plan bearing
sheave 45 x 12 mm
Max rope diameter 10 mm
SWL on control blocks 500 kg

Article No.	Type	SWL kg	BL kg	Sheave size mm	Sheave type	Max rope mm	Length mm	Slide type	Weight g	Track mm
Delrin Balls										
03066	Spinnaker car with ring (inside 40 mm) and stop	1800	3600				140	Delrin Balls		30
03097	Spinnaker car with ring (inside 40 mm) and 5 mm shackles	1800	3600			10	140	Delrin Balls		30
03110	Spinnaker car with ring (inside 40 mm) and blocks	2100	4200	45 x 12	Delrin plan bearing	10	225	Delrin Balls		30
Delrin Rods										
03065	Spinnaker car with ring (inside 40 mm) and stop	2000	4000				140	Delrin Rods		30
03089	Spinnaker car with ring (inside 40 mm) and 5 mm shackles	2000	4000			10	140	Delrin Rods		30
03109	Spinnaker car with ring (inside 40 mm) and blocks	2500	5000	45 x 12	Delrin plan bearing	10	225	Delrin Rods		30

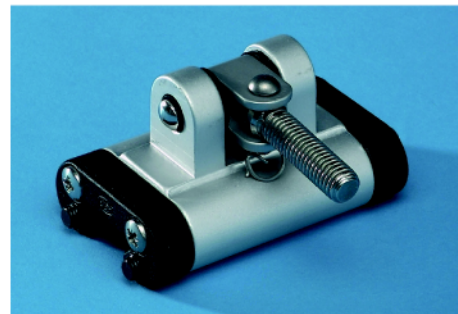
Choose the 30 mm travellers with recirculating balls if you want to adjust the main sail, even under heavy loads, and the slide rods travellers if you want a higher safe working load (SWL).



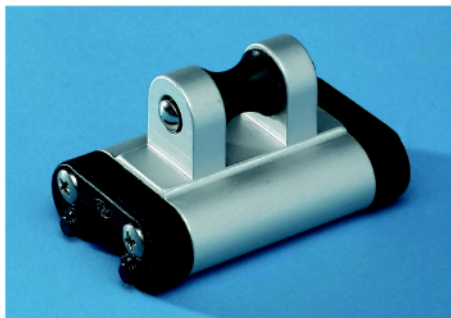
No. 03130
No. 03131



No. 03134
No. 03135



No. 03132
No. 03133



No. 03138
No. 03139



No. 03136
No. 03137

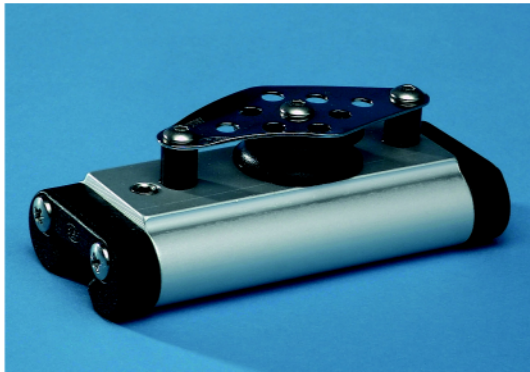
Car features:

Car body in aluminium (6082 T6)
Anodised minimum 25 my
Available in natural or black colour

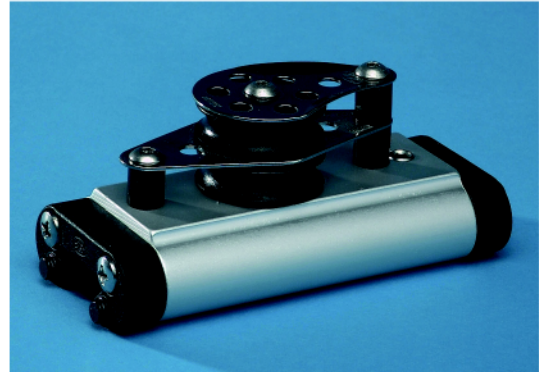
End caps in black delrin
Toggle and thread in aluminium
Anodised minimum 25 my

See page 37 for tracks
and mast groove slugs

Article No.	Type	SWL kg	BL kg	A mm	B mm	Width mm	Length mm	Slide type	Weight g	Track mm
Delrin Balls										
03130	Headboard car with stainless steel holder for headboard	2000	4000	43.5	88.5	65	255	Delrin Balls	1095	30
03132	Batten car with toggle and M12 mm tread for retainer	1400	2800	43.5	78	65	118	Delrin Balls	450	30
03134	Batten car with toggle and M12 mm tread for retainer	800	1600	43.5	78	65	77	Delrin Balls	315	30
03136	Webbing car	800	1600	43.5	57	65	77	Delrin Balls	240	30
03138	Webbing car STRONG	1400	2800	43.5	57	65	118	Delrin Balls	430	30
Delrin Rods										
03131	Headboard car with stainless steel holder for headboard	2400	4800	43.5	88.5	65	255	Delrin Rods	1095	30
03133	Batten car with toggle and M12 mm tread for retainer	1600	3200	43.5	78	65	118	Delrin Rods	450	30
03135	Batten car with toggle and M12 mm tread for retainer	900	1800	43.5	78	65	77	Delrin Rods	315	30
03137	Webbing car	900	1800	43.5	57	65	77	Delrin Rods	240	30
03139	Webbing car STRONG	1600	3200	43.5	57	65	118	Delrin Rods	430	30


 No. 03051
 No. 03053


No. 03072



No. 03071



No. 03070



No. 03068

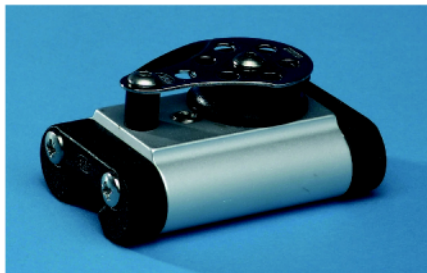
Car features:

Car body in aluminium (6082 T6)
 Anodised minimum 25 my
 Available in natural or black colour

End caps in black delrin
 10 mm Pinol screw, ables
 you to lock it to the track
 Cam cleats are adjustable in 3 positions

Control blocks in stainless steel 316
 with black delrin plan bearing
 sheave 45 x 12 mm
 Max rope diameter 10 mm
 Max SWL on control line 500 kg

Article No.	Type	SWL kg	BL kg	Sheave size mm	Sheave type	Max rope mm	Length mm	Slide type	Weight g	Track mm
Delrin Balls										
03051	Stop adjustable	500	1000				71	Delrin Balls	190	30
Delrin Rods										
03053	Stop adjustable	500	1000				71	Delrin Rods	190	30
03067	Control block double with becket and cam cleat (Starboard)	500	1000	45 x 12	Delrin plan bearing	10	140	Locked		30
03068	Control block double with becket and cam cleat (Port)	500	1000	45 x 12	Delrin plan bearing	10	140	Locked		30
03069	Control block with becket and cam cleat (Starboard)	500	1000	45 x 12	Delrin plan bearing	10	140	Locked		30
03070	Control block with becket and cam cleat (Port)	500	1000	45 x 12	Delrin plan bearing	10	140	Locked		30
03071	Control block double with becket	500	1000	45 x 12	Delrin plan bearing	10	140	Locked		30
03072	Control block with becket	500	1000	45 x 12	Delrin plan bearing	10	140	Locked	430	30



No. 03115



No. 03116



No. 03119



No. 03121

Car features:

Car body in aluminium (6082 T6)
Anodised minimum 25 my
Available in natural or black colour

End caps in black delrin
10 mm Pinol screw, ables
you to lock it to the track
Cam cleats are adjustable in 3 positions

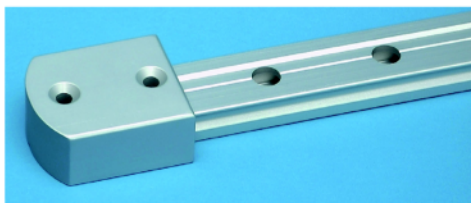
Control blocks in stainless steel 316
with black delrin plan bearing
sheave 45 x 12 mm
Max rope diameter 10 mm
SWL on control line 500 kg

Article No.	Type	SWL kg	BL kg	Sheave size mm	Sheave type	Max rope mm	Length mm	Slide type	Weight g	Track mm
Delrin Rods										
03115	Control block	500	1000	45 x 12	Delrin plan bearing	10	111	Locked	330	30
03116	Control block double	500	1000	45 x 12	Delrin plan bearing	10	111	Locked	370	30
03119	Control block with cam cleat (Port)	500	1000	45 x 12	Delrin plan bearing	10	111	Locked	330	30
03120	Control block with cam cleat (Starboard)	500	1000	45 x 12	Delrin plan bearing	10	111	Locked	330	30
03121	Control block double with cam cleat (Port)	500	1000	45 x 12	Delrin plan bearing	10	111	Locked	370	30
03122	Control block double with cam cleat (Starboard)	500	1000	45 x 12	Delrin plan bearing	10	111	Locked	370	30

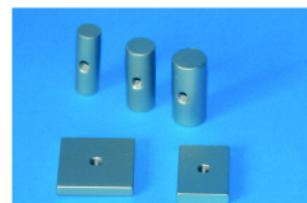


Track features:

Track in aluminium (6082 T6)
Anodised minimum 25 my
Available in natural or black colour



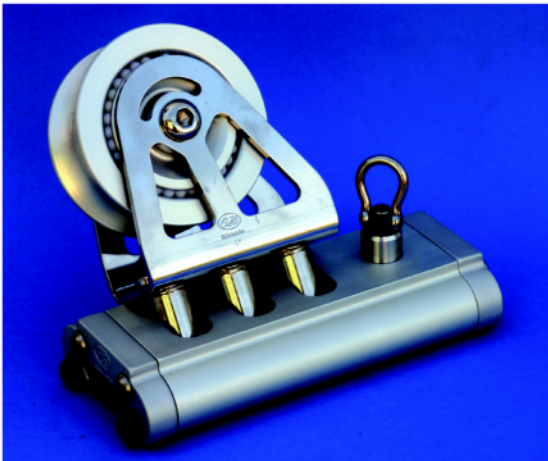
No. 03307



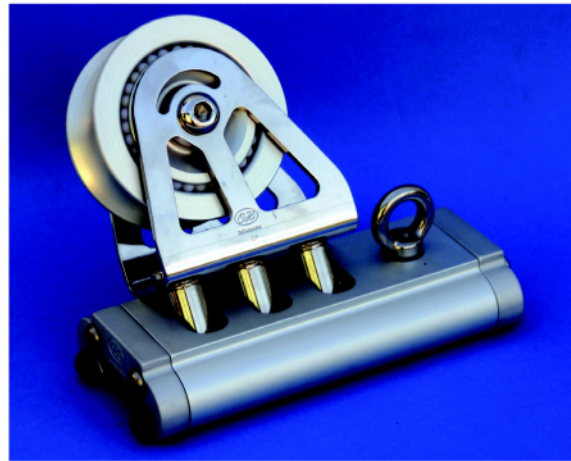
Mast groove slugs

Article No.	Type	Length m	Width mm	Height mm	Hole pitch mm	Fasteners mm	Weight g
03340	30 Track	1	30	16	50	6	790
03341	30 Track	1.5	30	16	50	6	1185
03342	30 Track	2	30	16	50	6	1580
03343	30 Track	2.5	30	16	50	6	1975
03344	30 Track	3	30	16	50	6	2370
03345	30 Track	4	30	16	50	6	3160
03346	30 Track	5	30	16	50	6	3950
03347	30 Track	6	30	16	50	6	4740
03303	Delrin end cap for 30 track	27 mm	34	19		6	14
03307	Alu end for 30 track	58 mm	50	35	35	6	122
03371	30 track assembly	33 mm	12	4			2
03378	Mast groove slug for 30 mm track	30 mm	Ø 14			6	
03379	Mast groove slug for 30 mm track	30 mm	Ø 10			6	
03380	Mast groove slug for 30 mm track	30 mm	Ø 12			6	
03381	Mast groove slug for 30 mm track	30 mm	25	5		6	
03382	Mast groove slug for 30 mm track	30 mm	25	6		6	
03383	Mast groove slug for 30 mm track	30 mm	30	6		6	
03385	Mast groove slug for 30 mm track	25 mm	21	6		6	

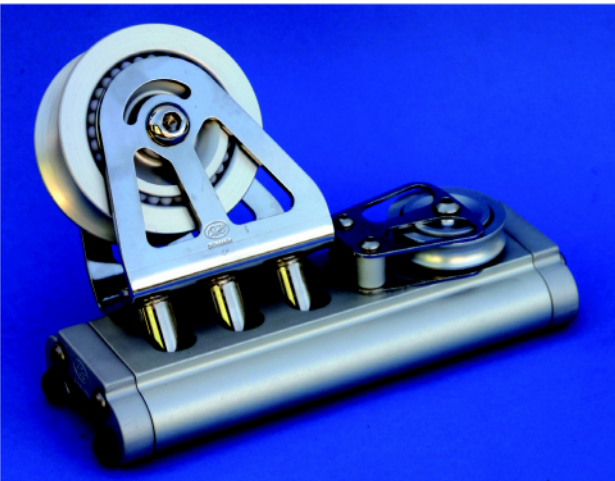
Choose the 42 mm travellers with recirculating balls if you want to adjust the sheet angle, even under heavy loads, and the slide rods travellers if you want a higher safe working load (SWL).



No. 04215 / 04315
No. 04216 / 04316



No. 04217 / 04317
No. 04218 / 04318



No. 04219 / 04319
No. 04220 / 04320

Genoa car features:

Car body in aluminium (6082 T6)
Anodised minimum 25 my - available in natural or black colour

End caps in aluminium
Polished stainless steel 316 stirrup,
pivots 45 degrees to each side
with aluminium ball bearing sheave (5 rows of balls)

Control blocks in stainless steel 316
with aluminium ball bearing sheave (3 rows of balls)
42 Medium - Size 57 x 16 mm
Max rope diameter 14 mm
SWL on control line 1800 kg
42 Large - Size 75 x 20 mm
Max rope diameter 18 mm
SWL on control line 2400 kg

42 Medium:

Article No.	Type	SWL kg	BL kg	Sheave size mm	Sheave type	Max rope mm	Length mm	Slide type	Weight g	Track mm
Delrin Balls										
04216	Genoa car with stop	3100	6200	100 x 45	Aluminium ball bearing	25	200	Delrin Balls	2450	42
04218	Genoa car with eye	3100	6200	100 x 45	Aluminium ball bearing	25	200	Delrin Balls	2490	42
04220	Genoa car with control block	3400	6800	100 x 45	Aluminium ball bearing	25	250	Delrin Balls	2805	42
Delrin Rods										
04215	Genoa car with stop	3700	7400	100 x 45	Aluminium ball bearing	25	185	Delrin Rods	2450	42
04217	Genoa car with eye	3700	7400	100 x 45	Aluminium ball bearing	25	185	Delrin Rods	2490	42
04219	Genoa car with control block	4000	8000	100 x 45	Aluminium ball bearing	25	250	Delrin Rods	2805	42

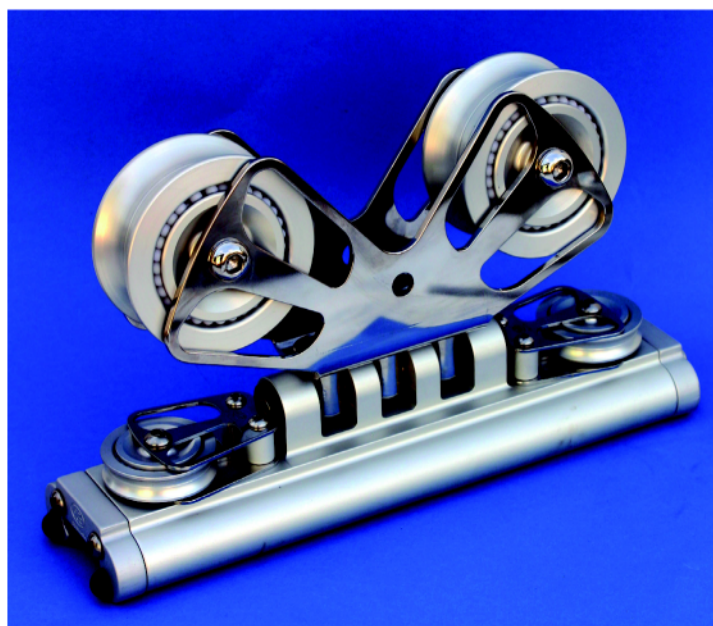
42 Large:

Article No.	Type	SWL kg	BL kg	Sheave size mm	Sheave type	Max rope mm	Length mm	Slide type	Weight g	Track mm
Delrin Balls										
04316	Genoa car with stop	4300	8600	150 x 45	Aluminium ball bearing	25	280	Delrin Balls		42
04318	Genoa car with eye	4300	8600	150 x 45	Aluminium ball bearing	25	280	Delrin Balls		42
04320	Genoa car with control block	5100	10200	150 x 45	Aluminium ball bearing	25	325	Delrin Balls		42
Delrin Rods										
04315	Genoa car with stop	5000	10000	150 x 45	Aluminium ball bearing	25	245	Delrin Rods		42
04317	Genoa car with eye	5000	10000	150 x 45	Aluminium ball bearing	25	245	Delrin Rods		42
04319	Genoa car with control block	5600	12000	150 x 45	Aluminium ball bearing	25	300	Delrin Rods		42

Choose the 42 mm travellers with recirculating balls if you want to adjust the sheet angle, even under heavy loads, and the slide rods travellers if you want a higher safe working load (SWL).



No. 04203 / 04303
No. 04204 / 04304



No. 04201 / 04301
No. 04202 / 04302

Car features:

Car body in aluminium (6082 T6)
Anodised minimum 25 my
Available in natural or black colour

End caps in aluminium
Stirrup in polished stainless steel 316
pivots 45 degrees to each side

Control blocks in stainless steel 316
with aluminium ball bearing sheave
(3 rows of balls)

42 Medium -

Size 57 x 16 mm
Max rope diameter 14 mm
SWL on control line 1800 kg
Size 75 x 20 mm
Max rope diameter 18 mm
SWL on control line 2400 kg

42 Large -

42 Medium:

Article No.	Type	SWL kg	BL kg	Sheave size mm	Sheave type	Max rope mm	Length mm	Slide type	Weight g	Track mm
Delrin Balls										
04202	Mainsheet car with blocks	4250	8500	100 x 45	Aluminium ball bearing	25	340	Delrin Balls	4795	42
04204	Mainsheet car with 10 mm shackles and control blocks	3000	6000		Aluminium ball bearing		290	Delrin Balls	1940	42
Delrin Rods										
04201	Mainsheet car with blocks	5000	10000	100 x 45	Aluminium ball bearing	25	325	Delrin Rods	4795	42
04203	Mainsheet car with 10 mm shackles and control blocks	3000	6000		Aluminium ball bearing		275	Delrin Rods	1940	42

42 Large:

Article No.	Type	SWL kg	BL kg	Sheave size mm	Sheave type	Max rope mm	Length mm	Slide type	Weight g	Track mm
Delrin Balls										
04302	Mainsheet car with blocks	6800	13600	150 x 45	Aluminium ball bearing	25	450	Delrin Balls		42
04304	Mainsheet car with 12 mm shackles and control blocks	4000	8000		Aluminium ball bearing	25	370	Delrin Balls		42
Delrin Rods										
04301	Mainsheet car with blocks	8000	16000	150 x 45	Aluminium ball bearing	25	420	Delrin Rods		42
04303	Mainsheet car with 12 mm shackles and control blocks	4000	8000		Aluminium ball bearing	25	355	Delrin Rods		42

Choose the 42 mm travellers with recirculating balls if you want to adjust the pole angle, even under heavy loads, and the slide rods travellers if you want a higher safe working load (SWL).



No. 04231 / 04331
No. 04232 / 04332



No. 04233 / 04333
No. 04234 / 04334

See page 42 for pole ends

Car features:

Car body in aluminium (6082 T6)
Anodised minimum 25 my
Available in natural or black colour

End caps in aluminium
42 Medium - 27 mm bajonet
42 Large - 35 mm bajonet
in aluminium and polished stainless steel 316 pivots 95 degrees to each side

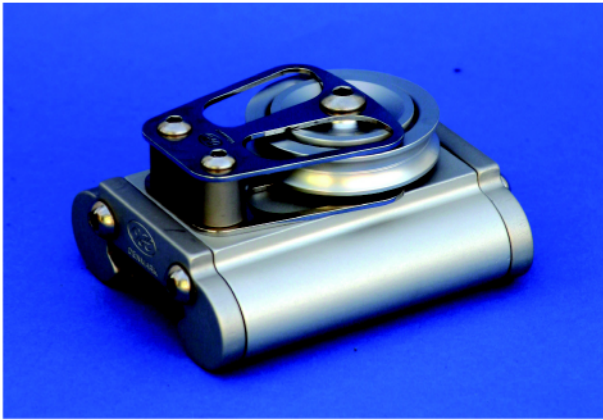
Control blocks in stainless steel 316 with aluminium ball bearing sheave (3 rows of balls)
42 Medium - Size 57 x 16 mm
Max rope diameter 14 mm
SWL on control line 1800 kg
42 Large - Size 75 x 20 mm
Max rope diameter 18 mm
SWL on control line 2400 kg

42 Medium:

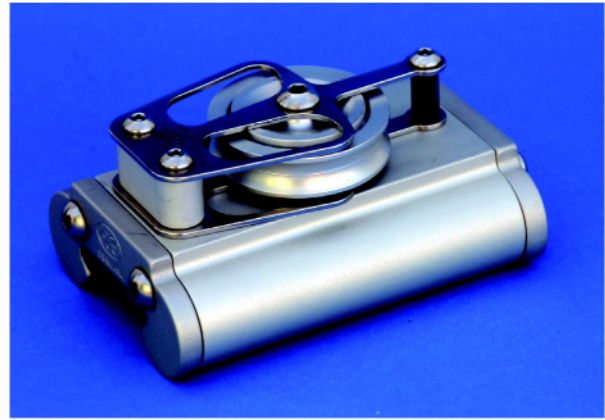
Article No.	Type	SWL kg	BL kg	Sheave size mm	Sheave type	Max rope mm	Length mm	Slide type	Weight g	Track mm
Delrin Balls										
04232	Spinnaker car with 27 mm bajonet for pole end and blocks for control	3000	6000	57 x 16	Aluminium ball bearing		315	Delrin Balls	2570	42
04234	Spinnaker car with 27 mm bajonet for pole end and shackles for control	2300	4600				250	Delrin Balls	2005	42
Delrin Rods										
04231	Spinnaker car with 27 mm bajonet for pole end and blocks for control	3500	7000	57 x 16	Aluminium ball bearing		300	Delrin Rods	2570	42
04233	Spinnaker car with 27 mm bajonet for pole end and shackles for control	2700	5400				235	Delrin Rods	2005	42

42 Large:

Article No.	Type	SWL kg	BL kg	Sheave size mm	Sheave type	Max rope mm	Length mm	Slide type	Weight g	Track mm
Delrin Balls										
04332	Spinnaker car with 35 mm bajonet for pole end and blocks for control	4250	8500	75 x 20	Aluminium ball bearing		380	Delrin Balls		42
04334	Spinnaker car with 35 mm bajonet for pole end and shackles for control	3400	6800					Delrin Balls		42
Delrin Rods										
04331	Spinnaker car with 35 mm bajonet for pole end and blocks for control	5000	10000	75 x 20	Aluminium ball bearing		380	Delrin Rods		42
04333	Spinnaker car with 35 mm bajonet for pole end and shackles for control	4000	8000					Delrin Rods		42



No. 04245 / 04345



No. 04247 / 04347

Car features:

Car body in aluminium (6082 T6)
Anodised minimum 25 my
Available in natural or black colour

End caps in aluminium
12 mm Pinol screw, ables
you to lock it to the track

Control blocks in stainless steel 316
with aluminium ball bearing sheave
(3 rows of balls)

42 Medium - Size 57 x 16 mm
Max rope diameter 14 mm
SWL on control line 1800 kg

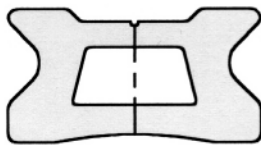
42 Large - Size 75 x 20 mm
Max rope diameter 18 mm
SWL on control line 2400 kg

42 Medium:

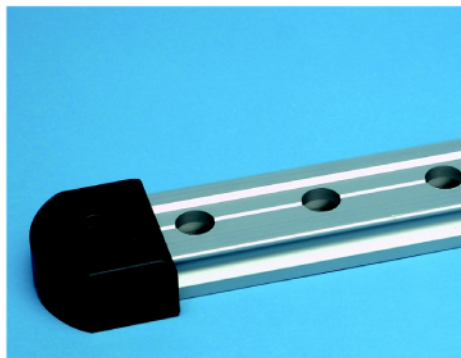
Article No.	Type	SWL kg	BL kg	Sheave size mm	Sheave type	Max rope mm	Length mm	Slide type	Weight g	Track mm
Delrin Rods										
04245	Single control block	1800	3600	57 x 16	Aluminium ball bearing	14	100	Locked	755	42
04247	Single control block with becket	1800	3600	57 x 16	Aluminium ball bearing	14	130	Locked	915	42

42 Large:

Article No.	Type	SWL kg	BL kg	Sheave size mm	Sheave type	Max rope mm	Length mm	Slide type	Weight g	Track mm
Delrin Rods										
04345	Single control block	2400	4800	75 x 20	Aluminium ball bearing	18	120	Locked		42
04347	Single control block with becket	2400	4800	75 x 20	Aluminium ball bearing	18	160	Locked		42

**Track features:**

Track in aluminium (6082 T6)
Anodised minimum 25 my
Available in natural or black colour

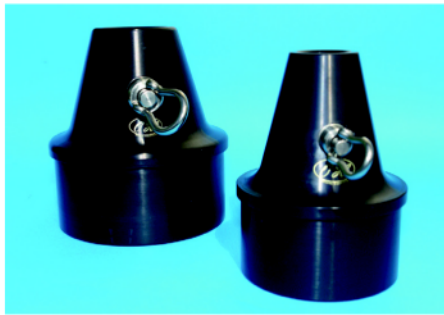


No. 03308



No. 04253

Article No.	Type	Length m	Width mm	Hight mm	Hole pitch mm	Fastenings mm	Weight g
03360	42 mm Track	1	42	21	50	8	1445
03361	42 mm Track	1.5	42	21	50	8	2168
03362	42 mm Track	2	42	21	50	8	2890
03363	42 mm Track	2.5	42	21	50	8	3163
03364	42 mm Track	3	42	21	50	8	4335
03365	42 mm Track	4	42	21	50	8	5780
03366	42 mm Track	5	42	21	50	8	7225
03367	42 mm Track	6	42	21	50	8	8670
03308	Alu end stop for 42 mm track	49 mm	60	25		8	135
04253	Stop adjustable for 42 mm track	75 mm					500

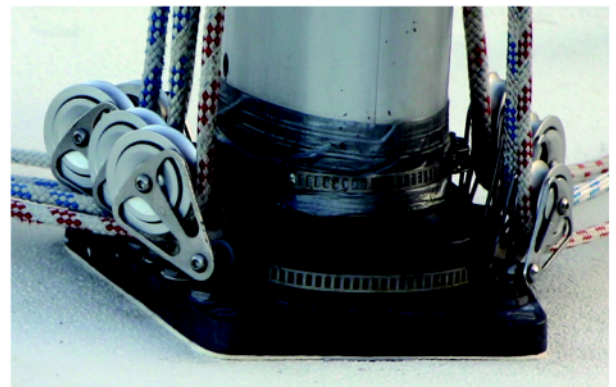


Spinnaker pole end features:
Body in aluminium (6082 T6)
Black anodised minimum 25 my

Lock in stainless steel 316

Article No.	Type	Bajonet size mm	Tube size mm	Lenght outside tube mm	weight g
306055	Pole end	21.5	60 x 55	60	275
307672	Pole end	21.5	76 x 72	82	430
308076	Pole end	21.5	80 x 76	83	510
309085	Pole end	21.5	90 x 85	74	715
310094	Pole end	21.5	100 x 94	90	800
310095	Pole end	27	100 x 94	90	900
311511	Pole end	27	115 x 110	80	1290
312011	Pole end	27	120 x 114	80	1320
312012	Pole end	35	120 x 114	80	1200
314013	Pole end	35	140 x 130	80	1500

Our products require only a minimum of maintenance. However, all equipment needs occasionnal cleaning. The best way is simply to clean in fresh water, when you are cleaning the boat and after having dried up spray with our teflon dry spray! It is important that you DON'T use products containing silicon, oil etc. as they attract salt and dirt. It will end up working as a grinding compound in bearings, hubs etc.



A special dry spray with teflon has been developed for OH MARINE EQUIPMENT for the maritime environment for lubrication of bearings, cam cleats, winches, genoa cars, luff tracks etc.

OH Teflon Dry Spray will dry up in a few minutes leaving a thin film of dry teflon with great reduction of friction and excellent glide factor without being greasy. OH Teflon Dry Spray is colourless and therefore excellent for lubrication of for example luff tracks as it does not stain the sails.

The teflon dry spray uses carbon dioxide as propellant

Content: Concentrate 260 ml, propellant 10 ml



No. 850000



No. 850012

Tuff-Gel is for all metal threads and for locking screws. It seals fast, resists vibration loosening, oil and solvents and prevents galling.



No. 850010

Tef-Gel stops corrosion of stainless screws in aluminium and any other dissimilar metal corrosion. Furthermore, it stops seizing and galling of stainless bolts and nuts.

09