

Genoa Cars - Spinnaker Pole Cars



Genoa car with block for line control

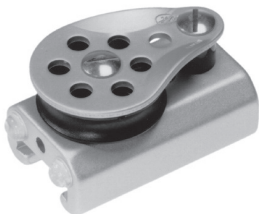


Genoa car with shackle and stop



Adjustable stop

Cat.no.		Cat.no.		Cat.no.	
02531	for 25 mm track with alu. ball sheave	02525	for 25 mm track	02517	for 25 mm track
02533	for 25 mm track with delrin sheave	03225	for 32 mm track	03217	for 32 mm track
03231	for 32 mm track with alu. ball sheave				
03233	for 32 mm track with delrin sheave				



Stop with block



Stop with block and becket



Spinnaker pole car with eye for line control

Cat.no.		Cat.no.		Cat.no.	
02526	for 25 mm track	02535	for 25 mm track	02527	for 25 mm track, ring (inside 32 mm)
03226	for 32 mm track	03235	for 32 mm track	03227	for 32 mm track, ring (inside 40 mm)

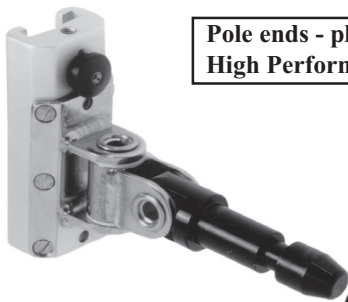


Spinnaker pole car with stop



Spinnaker pole car with blocks for line control

Cat.no.		Cat.no.	
02528	for 25 mm track with ring (inside 32 mm)	02534	for 25 mm track with ring (inside 32 mm)
03228	for 32 mm track with ring (inside 40 mm)	03234	for 32 mm track with ring (inside 40 mm)



Spinnaker pole car with toggle, 21.5 mm tap

Pole ends - please see page 42 in the High Performance Catalogue



Spinnaker pole car with toggle, 27 mm tap

Cat.no.		Cat.no.	
03218	For 32 mm track with stop	03220	For 32 mm track with blocks for line control
03219	For 32 mm track with eyes for line control		