

Choose the 22 mm travellers with recirculating balls if you want to adjust the sheet angle, even under heavy loads, and the slide rods travellers if you want a higher safe working load (SWL).



No. 02360

Reefing car features:

- Car body in aluminium (6082 T6)
- Anodised minimum 25 my
- Available in natural or black colour
- End caps in black delrin
- Block side in stainless steel 316
- with black delrin plan bearing sheaves

How to mount the reefing car

Article No.	Type	SWL kg	BL kg	Sheave size mm	Sheave type	Max rope mm	Length mm	Slide type	Weight g	Track mm
02360	One line reefing car 22 mm	800	1600	35 x 10	Delrin plan bearing	8	123	Delrin balls	255	22



No. 02300
No. 02301



No. 02303
No. 02304



No. 02305
No. 02306



No. 02307
No. 02308

Genoa car features:

- Car body in aluminium (6082 T6)
- Anodised minimum 25 my
- Available in natural or black colour

- End caps in black delrin
- Polished stainless steel 316 stirrup, pivots 45 degrees to each side with aluminium ball bearing sheave (4 rows of balls)

- Control blocks in stainless steel 316 with black delrin plan bearing sheave 35 x 10 mm
- Max rope diameter 8 mm
- SWL on control line 300 kg

Article No.	Type	SWL kg	BL kg	Sheave size mm	Sheave type	Max rope mm	Length mm	Slide type	Weight g	Track mm
Delrin Balls										
02300	Genoa car with stop	900	1800	44 x 22.5	Aluminium ball bearing	18	120	Delrin Balls	426	22
02303	Genoa car with eye	900	1800	44 x 22.5	Aluminium ball bearing	18	125	Delrin Balls	418	22
02305	Genoa car with block	1000	2000	44 x 22.5	Aluminium ball bearing	18	155	Delrin Balls	495	22
02307	Genoa car with double block	1000	2000	44 x 22.5	Aluminium ball bearing	18	155	Delrin Balls	520	22
Delrin Rods										
02301	Genoa car with stop	1000	2000	44 x 22.5	Aluminium ball bearing	18	120	Delrin Rods	426	22
02304	Genoa car with eye	1000	2000	44 x 22.5	Aluminium ball bearing	18	125	Delrin Rods	418	22
02306	Genoa car with block	1200	2400	44 x 22.5	Aluminium ball bearing	18	155	Delrin Rods	495	22
02308	Genoa car with double block	1200	2400	44 x 22.5	Aluminium ball bearing	18	155	Delrin Rods	520	22

Choose the 22 mm travellers with recirculating balls if you want to adjust the sheet angle, even under heavy loads, and the slide rods travellers if you want a higher safe working load (SWL).



No. 02277
No. 02278



No. 02279
No. 02280



No. 02290
No. 02295



No. 02291
No. 02296

Genoa car features:

Car body in aluminium (6082 T6)
Anodised minimum 25 my
Available in natural or black colour

End caps in black delrin
Polished stainless steel 316 stirrup,
pivots 45 degrees to each side
with black delrin plan bearing sheave

Control blocks in stainless steel 316
with black delrin plan bearing
sheave 35 x 10 mm
Max rope diameter 8 mm
SWL on control line 300 kg

Article No.	Type	SWL kg	BL kg	Sheave size mm	Sheave type	Max rope mm	Length mm	Slide type	Weight g	Track mm
Delrin Balls										
02278	Genoa car with stop	900	1800	44 x 22.5	Delrin plan bearing	18	120	Delrin Balls	401	22
02280	Genoa car with double block	1000	2000	44 x 22.5	Delrin plan bearing	18	155	Delrin Balls	500	22
02295	Genoa car with block	1000	2000	44 x 22.5	Delrin plan bearing	18	155	Delrin Balls	475	22
02296	Genoa car with eye	900	1800	44 x 22.5	Delrin plan bearing	18	125	Delrin Balls	396	22
Delrin Rods										
02277	Genoa car with stop	1000	2000	44 x 22.5	Delrin plan bearing	18	120	Delrin Rods	401	22
02279	Genoa car with double block	1200	2400	44 x 22.5	Delrin plan bearing	18	155	Delrin Rods	500	22
02290	Genoa car with block	1200	2400	44 x 22.5	Delrin plan bearing	18	155	Delrin Rods	475	22
02291	Genoa car with eye	1000	2000	44 x 22.5	Delrin plan bearing	18	125	Delrin Rods	396	22



Choose the 22 mm travellers with recirculating balls if you want to adjust the sheet angle, even under heavy loads, and the slide rods travellers if you want a higher safe working load (SWL).



No. 02249
No. 02250



No. 02254
No. 02255



No. 02260
No. 02261



No. 02263
No. 02264



No. 02256
No. 02257



No. 02258
No. 02259

Car features:

Car body in aluminium (6082 T6)
Anodised minimum 25 my
Available in natural or black colour

End caps in black delrin
Polished stainless steel 316 eye
pivots 45 degrees to each side

Control blocks in stainless steel 316
with black delrin plan bearing
sheave 35 x 10 mm
Max rope diameter 8 mm
SWL on control blocks 300 kg

Article No.	Type	SWL kg	BL kg	Sheave size mm	Sheave type	Max rope mm	Length mm	Slide type	Weight g	Track mm
Delrin Balls										
02250	Mainsheet car with eye and blocks	900	1800	25 x 10	Delrin plan bearing	8	120	Delrin Balls	287	22
02254	Car with shackle	900	1800				125	Delrin Balls	239	22
02256	Car with shackle	425	850				80	Delrin Balls	159	22
02258	Car with shackle and adjustable stop	525	1050				95	Delrin Balls	208	22
02260	Outhaulcar with block	900	1800	35 x 10	Delrin plan bearing	8	125	Delrin Balls	275	22
02264	Outhaulcar with double block	900	1800	35 x 10	Delrin plan bearing	8	125	Delrin Balls	300	22
Delrin Rods										
02249	Mainsheet car with eye and blocks	1000	2000	25 x 10	Delrin plan bearing	8	120	Delrin Rods	401	22
02255	Car with shackle	1000	2000				125	Delrin Rods	500	22
02257	Car with shackle	500	1000				80	Delrin Rods	475	22
02259	Car with shackle and adjustable stop	625	1250				95	Delrin Rods	396	22
02261	Outhaulcar with block	1000	2000	35 x 10	Delrin plan bearing	8	125	Delrin Rods	426	22
02263	Outhaulcar with double block	1000	2000	35 x 10	Delrin plan bearing	8	125	Delrin Rods	418	22

Choose the 22 mm travellers with recirculating balls if you want to adjust the sheet angle, even under heavy loads, and the slide rods travellers if you want a higher safe working load (SWL).



No. 02281
No. 02282



No. 02283
No. 02284



No. 02285
No. 02286



No. 02287
No. 02288

Car features:

Car body in aluminium (6082 T6)
Anodised minimum 25 µm
Available in natural or black colour

End caps in black delrin
6 mm eye in polished stainless steel 316
pivots 45 degrees to each side
Cam cleats are adjustable in 3 positions

Control blocks in stainless steel 316
with black delrin plan bearing
sheave 35 x 10 mm
Max rope diameter 8 mm
SWL on control blocks 300 kg

Article No.	Type	SWL kg	BL kg	Sheave size mm	Sheave type	Max rope mm	Length mm	Slide type	Weight g	Track mm
Delrin Balls										
02282	Mainsheet car with double blocks, becket and cam cleats	1000	2000	35 x 10	Delrin plan bearing	8	225	Delrin Balls	745	22
02284	Mainsheet car with blocks, becket and cam cleats	1000	2000	35 x 10	Delrin plan bearing	8	225	Delrin Balls	700	22
02286	Mainsheet car with blocks	1000	2000	35 x 10	Delrin plan bearing	8	180	Delrin Balls	396	22
02288	Mainsheet car with double blocks	1000	2000	35 x 10	Delrin plan bearing	8	180	Delrin Balls	445	22
Delrin Rods										
02281	Mainsheet car with double blocks, becket and cam cleats	1200	2400	35 x 10	Delrin plan bearing	8	225	Delrin Rods	745	22
02283	Mainsheet car with blocks, becket and cam cleats	1200	2400	35 x 10	Delrin plan bearing	8	225	Delrin Rods	700	22
02285	Mainsheet car with blocks	1200	2400	35 x 10	Delrin plan bearing	8	180	Delrin Rods	396	22
02287	Mainsheet car with double blocks	1200	2400	35 x 10	Delrin plan bearing	8	180	Delrin Rods	445	22



Choose the 22 mm travellers with recirculating balls if you want to adjust the sheet angle, even under heavy loads, and the slide rods travellers if you want a higher safe working load (SWL).



No. 02294
No. 02299



No. 02313
No. 02314



No. 02317
No. 02318

Car features:

Car body in aluminium (6082 T6)
Anodised minimum 25 my
Available in natural or black colour

End caps in black delrin
6 mm eye in polished stainless steel 316
pivots 45 degrees to each side
Cam cleats are adjustable i 3 positions

Control blocks in stainless steel 316
with black delrin plan bearing
sheave 35 x 10 mm
Max rope diameter 8 mm
SWL on control blocks 300 kg

Article No.	Type	SWL kg	BL kg	Sheave size mm	Sheave type	Max rope mm	Length mm	Slide type	Weight g	Track mm
Delrin Balls										
02299	Mainsheet car with blocks and cam cleat	1000	2000	35 x 10	Delrin plan bearing	8	180	Delrin Balls	583	22
02314	Mainsheet car with blocks and becket	1000	2000	35 x 10	Delrin plan bearing	8	225	Delrin Balls	510	22
02318	Mainsheet car with double blocks and becket	1000	2000	35 x 10	Delrin plan bearing	8	225	Delrin Balls	557	22
Delrin Rods										
02294	Mainsheet car with blocks and cam cleat	1200	2400	35 x 10	Delrin plan bearing	8	180	Delrin Rods	583	22
02313	Mainsheet car with blocks and becket	1200	2400	35 x 10	Delrin plan bearing	8	225	Delrin Rods	510	22
02317	Mainsheet car with double blocks and becket	1200	2400	35 x 10	Delrin plan bearing	8	225	Delrin Rods	557	22

Choose the 22 mm travellers with recirculating balls if you want to adjust the pole angle, even under heavy loads, and the slide rods travellers if you want a higher safe working load (SWL).



No. 02275
No. 02276



No. 02311
No. 02312



No. 02293
No. 02298

See page 42 for pole ends

Car features:

Car body in aluminium (6082 T6)
Anodised minimum 25 my
Available in natural or black colour

End caps in black delrin
21.5 mm bajonet in aluminium
and polished stainless steel 316
pivots 95 degrees to each side

Control blocks in stainless steel 316
with black delrin plan bearing
sheave 35 x 10 mm
Max rope diameter 8 mm
SWL on control line 300 kg

Article No.	Type	SWL kg	BL kg	Sheave size mm	Sheave type	Max rope mm	Length mm	Slide type	Weight g	Track mm
Delrin Balls										
02276	Spinnaker car with blocks and 21.5 mm bajonet for pole end	1275	2550	35 x 10	Delrin plan bearing	8	225	Delrin Balls	742	22
02298	Spinnaker car with shackles and 21.5 mm bajonet for pole end	950	1900			8	135	Delrin Balls	580	22
02312	Spinnaker car with stop and 21.5 mm bajonet for pole end	900	1800				125	Delrin Balls		22
Delrin Rods										
02275	Spinnaker car with blocks and 21.5 mm bajonet for pole end	1500	3000	35 x 10	Delrin plan bearing	8	225	Delrin Rods	742	22
02293	Spinnaker car with shackles and 21.5 mm bajonet for pole end	1050	2100			8	135	Delrin Rods	580	22
02311	Spinnaker car with stop and 21.5 mm bajonet for pole end	1000	2000				125	Delrin Rods		22



Choose the 22 mm travellers with recirculating balls if you want to adjust the pole angle, even under heavy loads, and the slide rods travellers if you want a higher safe working load (SWL).



No. 02309
No. 02310



No. 02265
No. 02266



No. 02289
No. 02297

Car features:

Car body in aluminium (6082 T6)
Anodised minimum 25 my
Available in natural or black colour

End caps in black delrin
Ring (32 x 40 mm) in polished
stainless steel 316

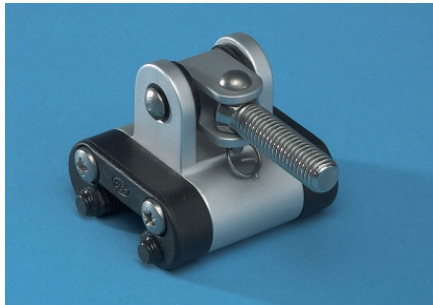
Control blocks in stainless steel 316
with black plan bearing
sheave 35 x 10 mm
Max rope diameter 8 mm
SWL on control blocks 300 kg

Article No.	Type	SWL kg	BL kg	Sheave size mm	Sheave type	Max rope mm	Length mm	Slide type	Weight g	Track mm
Delrin Balls										
02266	Spinnaker car with ring (inside 32 mm) and stop	900	1800				125	Delrin Balls	354	22
02297	Spinnaker car with ring (inside 32 mm) and 5 mm shackles	900	1800			8	125	Delrin Balls	358	22
02310	Spinnaker car with ring (inside 32 mm) and blocks	1100	2200	35 x 10	Delrin plan bearing	8	200	Delrin Balls	542	22
Delrin Rods										
02265	Spinnaker car with ring (inside 32 mm) and stop	1000	2000				125	Delrin Rods	354	22
02289	Spinnaker car with ring (inside 32 mm) and 5 mm shackles	1000	2000			8	125	Delrin Rods	358	22
02309	Spinnaker car with ring (inside 32 mm) and blocks	1300	2600	35 x 10	Delrin plan bearing	8	200	Delrin Rods	542	22

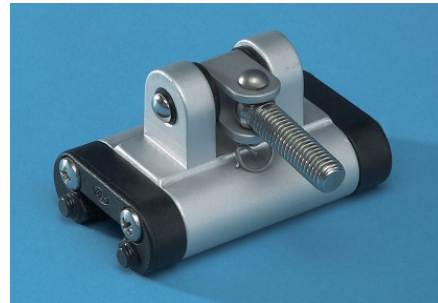
Choose the 22 mm travellers with recirculating balls if you want to adjust the main sail, even under heavy loads, and the slide rods travellers if you want a higher safe working load (SWL).



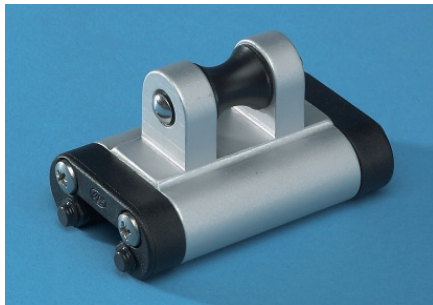
No. 02327
No. 02328
No. 02330
No. 02331



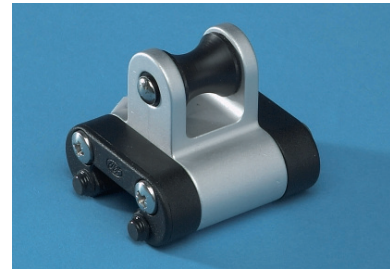
No. 02334
No. 02335



No. 02332
No. 02333



No. 02338
No. 02339



No. 02336
No. 02337

Car features:

Car body in aluminium (6082 T6)
Anodised minimum 25 my
Available in natural or black colour

End caps in black delrin
Toggle and thread in aluminium
Anodised minimum 25 my

See page 30 for Tracks
and mast groove slugs

Article No.	Type	SWL kg	BL kg	A mm	B mm	Width mm	Length mm	Slide type	Weight g	Track mm
Delrin Balls										
02328	Headboard car STRONG with stainless steel holder for headboard	1250	2500			51	205	Delrin Balls	865	22
02330	Headboard car with stainless steel holder for headboard	1000	2000	38	76	51	205	Delrin Balls	655	22
02332	Batten car with toggle and M10 mm tread for retainer	500	1000	38	59	51	90	Delrin Balls	217	22
02334	Batten car with toggle and M10 mm tread for retainer	325	650	38	59	51	60	Delrin Balls	150	22
02336	Webbing car	325	650	38	48.5	51	60	Delrin Balls	118	22
02338	Webbing car STRONG	500	1000	38	48.5	51	90	Delrin Balls	184	22
Delrin Rods										
02327	Headboard car STRONG with stainless steel holder for headboard	1375	2750			51	205	Delrin Rods	865	22
02331	Headboard car with stainless steel holder for headboard	1100	2200	38	76	51	205	Delrin Rods	655	22
02333	Batten car with toggle and M10 mm tread for retainer	600	1200	38	59	51	90	Delrin Rods	217	22
02335	Batten car with toggle and M10 mm tread for retainer	400	800	38	59	51	60	Delrin Rods	150	22
02337	Webbing car	400	800	38	48.5	51	60	Delrin Rods	118	22
02339	Webbing car STRONG	600	1200	38	48.5	51	90	Delrin Rods	184	22


 No. 02251
 No. 02253


No. 02272



No. 02271



No. 02270



No. 02268

Car features:

Car body in aluminium (6082 T6)
 Anodised minimum 25 my
 Available in natural or black colour

End caps in black delrin
 8 mm Pinol screw, ables
 you to lock it to the track
 Cam cleats are adjustable in 3 positions

Control blocks in stainless steel 316
 with black delrin plan bearing
 sheave 35 x 10 mm
 Max rope diameter 8 mm
 Max SWL on control line 300 kg

Article No.	Type	SWL kg	BL kg	Sheave size mm	Sheave type	Max rope mm	Length mm	Slide type	Weight g	Track mm
Delrin Balls										
02251	Stop adjustable	300	600				55	Delrin Balls	113	22
Delrin Rods										
02253	Stop adjustable	300	600				55	Delrin Rods	113	22
02267	Control block double with becket and cam cleat (Starboard)	300	600	35 x 10	Delrin plan bearing	8	120	Locked	380	22
02268	Control block double with becket and cam cleat (Port)	300	600	35 x 10	Delrin plan bearing	8	120	Locked	380	22
02269	Control block with becket and cam cleat (Starboard)	300	600	35 x 10	Delrin plan bearing	8	120	Locked	355	22
02270	Control block with becket and cam cleat (Port)	300	600	35 x 10	Delrin plan bearing	8	120	Locked	355	22
02271	Control block double with becket	300	600	35 x 10	Delrin plan bearing	8	120	Locked	284	22
02272	Control block with becket	300	600	35 x 10	Delrin plan bearing	8	120	Locked	260	22



No. 02315



No. 02319



No. 02316



No. 02321

Car features:

Car body in aluminium (6082 T6)
Anodised minimum 25 my
Available in natural or black colour

End caps in black delrin
8 mm Pinol screw, ables
you to lock it to the track
Cam cleats are adjustable in 3 positions

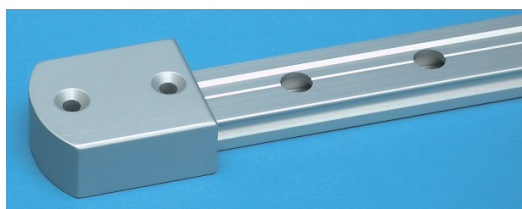
Control blocks in stainless steel 316
with black delrin plan bearing
sheave 35 x 10 mm
Max rope diameter 8 mm
Max SWL on control line 300 kg

Article No.	Type	SWL kg	BL kg	Sheave size mm	Sheave type	Max rope mm	Length mm	Slide type	Weight g	Track mm
Delrin Rods										
02315	Control block	300	600	35 x 10	Delrin plan bearing	8	85	Locked	185	22
02316	Control block double	300	600	35 x 10	Delrin plan bearing	8	85	Locked	210	22
02319	Control block with cam cleat (Port)	300	600	35 x 10	Delrin plan bearing	8	85	Locked	280	22
02320	Control block with cam cleat (Starboard)	300	600	35 x 10	Delrin plan bearing	8	85	Locked	280	22
02321	Control block double with cam cleat (Port)	300	600	35 x 10	Delrin plan bearing	8	85	Locked	305	22
02322	Control block double with cam cleat (Starboard)	300	600	35 x 10	Delrin plan bearing	8	85	Locked	305	22

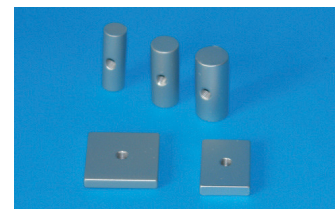


Track features:

Track in aluminium (6082 T6)
Anodised minimum 25 my
Available in natural or black colour



No. 03309



Mast groove slugs

Article No.	Type	Length m	Width mm	Height mm	Hole pitch mm	Fasteners mm	Weight g
03320	22 mm Track	1.0	22	13	50	5	465
03321	22 mm Track	1.5	22	13	50	5	698
03322	22 mm Track	2.0	22	13	50	5	930
03323	22 mm Track	2.5	22	13	50	5	1163
03324	22 mm Track	3.0	22	13	50	5	1395
03325	22 mm Track	4.0	22	13	50	5	1860
03326	22 mm Track	5.0	22	13	50	5	2325
03327	22 mm Track	6.0	22	13	50	5	2790
03302	Delrin end cap for 22 mm track	26 mm	26	14.5		5	12
03309	Alu end stop for 22 mm track	45 mm	30	20			40
03370	22 mm track assembly	40 mm	8	5			4
03374	Mast groove slug for 22 mm track	30 mm	Ø 14			5	
03375	Mast groove slug for 22 mm track	30 mm	Ø 10			5	
03376	Mast groove slug for 22 mm track	30 mm	Ø 12			5	
03377	Mast groove slug for 22 mm track	30 mm	25	5		5	
03390	Mast groove slug for 22 mm track	20 mm	30	5		5	
03391	Mast groove slug for 22 mm track	30 mm	30	5		5	
03392	Mast groove slug for 22 mm track	30 mm	30	6		5	