



Choose the 30 mm travellers with recirculating balls if you want to adjust the sheet angle, even under heavy loads, and the slide rods travellers if you want a higher safe working load (SWL).



No. 03160

Reefing car features:

- Car body in aluminium (6082 T6)
- Anodised minimum 25 my
- Available in natural or black colour
- End caps in black delrin
- Block side in stainless steel 316 with black delrin plan bearing sheaves

How to mount the reefing car

Article No.	Type	SWL kg	BL kg	Sheave size mm	Sheave type	Max rope mm	Length mm	Slide type	Weight g	Track mm
03160	One line reefing car 30 mm	1200	2400	45 x 12	Delrin plan bearing	12	155	Delrin balls	470	30



No. 03100
No. 03101



No. 03103
No. 03104



No. 03105
No. 03106



No. 03107
No. 03108

Genoa car features:

- Car body in aluminium (6082 T6)
- Anodised minimum 25 my
- Available in natural or black colour

- End caps in black delrin
- Polished stainless steel 316 stirrup, pivots 45 degrees to each side with aluminium ball bearing sheave (4 rows of balls)

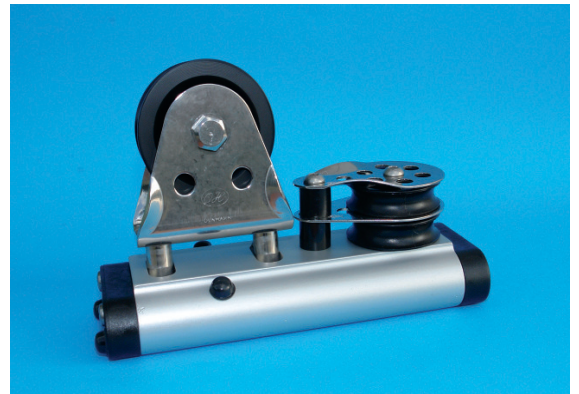
- Control blocks in stainless steel 316 with black delrin plan bearing sheave 45 x 12 mm
- Max rope diameter 10 mm
- SWL on control line 500 kg

Article No.	Type	SWL kg	BL kg	Sheave size mm	Sheave type	Max rope mm	Length mm	Slide type	Weight g	Track mm
Delrin Balls										
03100	Genoa car with stop	2000	4000	60 x 33	Aluminium ball bearing	16	160	Delrin Balls		30
03103	Genoa car with eye	2000	4000	60 x 33	Aluminium ball bearing	16	160	Delrin Balls		30
03105	Genoa car with block	2150	4300	60 x 33	Aluminium ball bearing	16	180	Delrin Balls		30
03107	Genoa car with double block	2150	4300	60 x 33	Aluminium ball bearing	16	180	Delrin Balls		30
Delrin Rods										
03101	Genoa car with stop	2300	4600	60 x 33	Aluminium ball bearing	16	160	Delrin Rods		30
03104	Genoa car with eye	2500	5000	60 x 33	Aluminium ball bearing	16	180	Delrin Rods		30
03106	Genoa car with block	2500	5000	60 x 33	Aluminium ball bearing	16	180	Delrin Rods		30
03108	Genoa car with double block	2300	4600	60 x 33	Aluminium ball bearing	16	160	Delrin Rods		30

Choose the 30 mm travellers with recirculating balls if you want to adjust the sheet angle, even under heavy loads, and the slide rods travellers if you want a higher safe working load (SWL).



No. 03077
No. 03078



No. 03079
No. 03080



No. 03090
No. 03095



No. 03091
No. 03096

Genoa car features:

Car body in aluminium (6082 T6)
Anodised minimum 25 µm
Available in natural or black colour

End caps in black delrin
Polished stainless steel 316 stirrup,
pivots 45 degrees to each side
with black delrin plan bearing sheave

Control blocks in stainless steel 316
with black delrin plan bearing
sheave 45 x 12 mm
Max rope diameter 10 mm
SWL on control line 500 kg

Article No.	Type	SWL kg	BL kg	Sheave size mm	Sheave type	Max rope mm	Length mm	Slide type	Weight g	Track mm
Delrin Balls										
03078	Genoa car with stop	2000	4000	60 x 33	Delrin plan bearing	16	160	Delrin Balls	700	30
03080	Genoa car with double block	2150	4300	60 x 33	Delrin plan bearing	16	180	Delrin Balls		30
03095	Genoa car with block	2150	4300	60 x 33	Delrin plan bearing	16	180	Delrin Balls		30
03096	Genoa car with eye	2000	4000	60 x 33	Delrin plan bearing	16	160	Delrin Balls		30
Delrin Rods										
03077	Genoa car with stop	2300	4600	60 x 33	Delrin plan bearing	16	160	Delrin Rods	700	30
03079	Genoa car with double block	2500	5000	60 x 33	Delrin plan bearing	16	180	Delrin Rods		30
03090	Genoa car with block	2500	5000	60 x 33	Delrin plan bearing	16	180	Delrin Rods		30
03091	Genoa car with eye	2300	4600	60 x 33	Delrin plan bearing	16	160	Delrin Rods		30



Choose the 30 mm travellers with recirculating balls if you want to adjust the sheet angle, even under heavy loads, and the slide rods travellers if you want a higher safe working load (SWL).



No. 03049
No. 03050



No. 03054 / 03055 / 03056 / 03057



No. 03060
No. 03061



No. 03063
No. 03064



No. 03058
No. 03059

Car features:

Car body in aluminium (6082 T6)
Anodised minimum 25 µm
Available in natural or black colour

End caps in black delrin
8 mm eye in polished stainless steel 316
pivots 45 degrees to each side

Control blocks in stainless steel 316
with black delrin plan bearing
sheave 45 x 12 mm
Max rope diameter 10 mm
SWL on control blocks 500 kg

Article No.	Type	SWL kg	BL kg	Sheave size mm	Sheave type	Max rope mm	Length mm	Slide type	Weight g	Track mm
Delrin Balls										
03050	Mainsheet car with eye and blocks	1800	3600	32 x 12	Delrin plan bearing	10	135	Delrin Balls		30
03054	Car with shackle	1800	3600				135	Delrin Balls	400	30
03056	Car with shackle	1300	2600				95	Delrin Balls	290	30
03058	Car with shackle and adjustable stop	1800	3600				135	Delrin Balls		30
03060	Outhaulcar with block	2000	4000	45 x 12	Delrin plan bearing	10	160	Delrin Balls	500	30
03064	Outhaulcar with double block	2000	4000	45 x 12	Delrin plan bearing	10	160	Delrin Balls		30
Delrin Rods										
03049	Mainsheet car with eye and blocks	2000	4000	32 x 12	Delrin plan bearing	10	135	Delrin Rods		30
03055	Car with shackle	2000	4000				135	Delrin Rods	400	30
03057	Car with shackle	1400	2800				95	Delrin Rods	290	30
03059	Car with shackle and adjustable stop	2000	4000				135	Delrin Rods		30
03061	Outhaulcar with block	2400	4800	45 x 12	Delrin plan bearing	10	160	Delrin Rods	500	30
03063	Outhaulcar with double block	2400	4800	45 x 12	Delrin plan bearing	10	160	Delrin Rods		30

Choose the 30 mm travellers with recirculating balls if you want to adjust the sheet angle, even under heavy loads, and the slide rods travellers if you want a higher safe working load (SWL).



No. 03081
No. 03082



No. 03083
No. 03084



No. 03085
No. 03086



No. 03087
No. 03088

Car features:

Car body in aluminium (6082 T6)
Anodised minimum 25 my
Available in natural or black colour

End caps in black delrin
8 mm eye in polished stainless steel 316
pivots 45 degrees to each side
Cam cleats are adjustable in 3 positions

Control blocks in stainless steel 316
with black delrin plan bearing
sheave 45 x 12 mm
Max rope diameter 10 mm
SWL on control blocks 500 kg

Article No.	Type	SWL kg	BL kg	Sheave size mm	Sheave type	Max rope mm	Length mm	Slide type	Weight g	Track mm
Delrin Balls										
03082	Mainsheet car with double blocks, becket and cam cleats	2200	4400	45 x 12	Delrin plan bearing	10	280	Delrin Balls		30
03084	Mainsheet car with blocks, becket and cam cleats	2200	4400	45 x 12	Delrin plan bearing	10	280	Delrin Balls		30
03086	Mainsheet car with blocks	2200	4400	45 x 12	Delrin plan bearing	10	230	Delrin Balls		30
03088	Mainsheet car with double blocks	2200	4400	45 x 12	Delrin plan bearing	10	230	Delrin Balls		30
Delrin Rods										
03081	Mainsheet car with double blocks, becket and cam cleats	2600	5200	45 x 12	Delrin plan bearing	10	280	Delrin Rods		30
03083	Mainsheet car with blocks, becket and cam cleats	2600	5200	45 x 12	Delrin plan bearing	10	280	Delrin Rods		30
03085	Mainsheet car with blocks	2600	5200	45 x 12	Delrin plan bearing	10	230	Delrin Rods		30
03087	Mainsheet car with double blocks	2600	5200	45 x 12	Delrin plan bearing	10	230	Delrin Rods		30



Choose the 30 mm travellers with recirculating balls if you want to adjust the sheet angle, even under heavy loads, and the slide rods travellers if you want a higher safe working load (SWL).



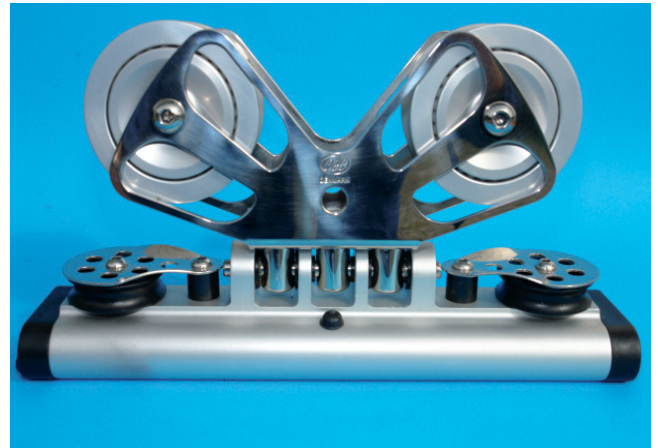
No. 03094
No. 03099



No. 03113
No. 03114



No. 03117
No. 03118



No. 03145
No. 03146

Car features:

Car body in aluminium (6082 T6)
Anodised minimum 25 my
Available in natural or black colour

End caps in black delrin
8 mm eye in polished stainless steel 316
pivots 45 degrees to each side
Cam cleats are adjustable i 3 positions

Control blocks in stainless steel 316
with black delrin plan bearing
sheave 45 x 12 mm
Max rope diameter 10 mm
SWL on control blocks 500 kg

Article No.	Type	SWL kg	BL kg	Sheave size mm	Sheave type	Max rope mm	Length mm	Slide type	Weight g	Track mm
Delrin Balls										
03099	Mainsheet car with blocks and cam cleat	2200	4400	45 x 12	Delrin plan bearing	10	230	Delrin Balls		30
03114	Mainsheet car with blocks and becket	2200	4400	45 x 12	Delrin plan bearing	10	280	Delrin Balls	835	30
03118	Mainsheet car with double blocks and becket	2200	4400	45 x 12	Delrin plan bearing	10	280	Delrin Balls	930	30
03146	Mainsheet car with blocks	3000	6000	75 x 33	Aluminium ball bearing	16	280	Delrin Balls	1600	30
Delrin Rods										
03094	Mainsheet car with blocks and cam cleat	2600	5200	45 x 12	Delrin plan bearing	10	230	Delrin Rods		30
03113	Mainsheet car with blocks and becket	2600	5200	45 x 12	Delrin plan bearing	10	280	Delrin Rods	835	30
03117	Mainsheet car with double blocks and becket	2600	5200	45 x 12	Delrin plan bearing	10	280	Delrin Rods	930	30
03145	Mainsheet car with blocks	3000	6000	75 x 33	Aluminium ball bearing	16	280	Delrin Rods	1600	30

Choose the 30 mm travellers with recirculating balls if you want to adjust the pole angle, even under heavy loads, and the slide rods travellers if you want a higher safe working load (SWL).



No. 03073 / 03074 / 03075 / 03076



No. 03111 / 03112 / 03149 / 03150



No. 03093 / 03098 / 03147 / 03148

See page 42 for pole ends

Car features:

Car body in aluminium (6082 T6)
Anodised minimum 25 my
Available in natural black colour

End caps in black delrin
21.5/27 mm bajonet in aluminium
and polished stainless steel 316
pivots 95 degrees to each side

Control blocks in stainless steel 316
with black delrin plan bearing
sheave 45 x 12 mm
Max rope diameter 10 mm
SWL on control line 500 kg

Article No.	Type	SWL kg	BL kg	Sheave size mm	Sheave type	Max rope mm	Length mm	Slide type	Weight g	Track mm
Delrin Balls										
03074	Spinnaker car with blocks and 27 mm bajonet for pole end	2750	5500	45 x 12	Delrin plan bearing	10	265	Delrin Balls	1293	30
03076	Spinnaker car with blocks and 21.5 mm bajonet for pole end	2400	4800	45 x 12	Delrin plan bearing	10	250	Delrin Balls		30
03098	Spinnaker car with shackles and 21.5 mm bajonet for pole end	1800	3600			10	140	Delrin Balls		30
03148	Spinnaker car with shackles and 27 mm bajonet for pole end	2000	4000				160	Delrin Balls		30
03112	Spinnaker car with stop and 21.5 mm bajonet for pole end	1800	3600				155	Delrin Balls	780	30
03150	Spinnaker car with stop and 27 mm bajonet for pole end	2000	4000				160	Delrin Balls		30
Delrin Rods										
03073	Spinnaker car with blocks and 27 mm bajonet for pole end	3200	6400	45 x 12	Delrin plan bearing	10	265	Delrin Rods	1293	30
03075	Spinnaker car with blocks and 21.5 mm bajonet for pole end	2800	5600	45 x 12	Delrin plan bearing	10	250	Delrin Rods		30
03093	Spinnaker car with shackles and 21.5 mm bajonet for pole end	1800	3600			10	140	Delrin Rods		30
03147	Spinnaker car with shackles and 27 mm bajonet for pole end	2000	4000				160	Delrin Rods		30
03111	Spinnaker car with stop and 21.5 mm bajonet for pole end	2000	4000				155	Delrin Rods	780	30
03149	Spinnaker car with stop and 27 mm bajonet for pole end	2000	4000				160	Delrin Rods		30



Choose the 30 mm travellers with recirculating balls if you want to adjust the pole angle, even under heavy loads, and the slide rods travellers if you want a higher safe working load (SWL).



No. 03109
No. 03110



No. 03065
No. 03066



No. 03089
No. 03097

Car features:

Car body in aluminium (6082 T6)
Anodised minimum 25 my
Available in natural or black colour

End caps in black delrin
Ring (40 x 50 mm) in polished
stainless steel 316

Control blocks in stainless steel 316
with black plan bearing
sheave 45 x 12 mm
Max rope diameter 10 mm
SWL on control blocks 500 kg

Article No.	Type	SWL kg	BL kg	Sheave size mm	Sheave type	Max rope mm	Length mm	Slide type	Weight g	Track mm
Delrin Balls										
03066	Spinnaker car with ring (inside 40 mm) and stop	1800	3600				140	Delrin Balls		30
03097	Spinnaker car with ring (inside 40 mm) and 5 mm shackles	1800	3600			10	140	Delrin Balls		30
03110	Spinnaker car with ring (inside 40 mm) and blocks	2100	4200	45 x 12	Delrin plan bearing	10	225	Delrin Balls		30
Delrin Rods										
03065	Spinnaker car with ring (inside 40 mm) and stop	2000	4000				140	Delrin Rods		30
03089	Spinnaker car with ring (inside 40 mm) and 5 mm shackles	2000	4000			10	140	Delrin Rods		30
03109	Spinnaker car with ring (inside 40 mm) and blocks	2500	5000	45 x 12	Delrin plan bearing	10	225	Delrin Rods		30

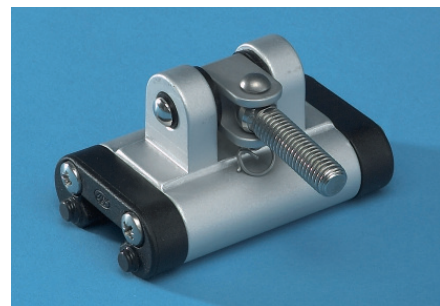
Choose the 30 mm travellers with recirculating balls if you want to adjust the main sail, even under heavy loads, and the slide rods travellers if you want a higher safe working load (SWL).



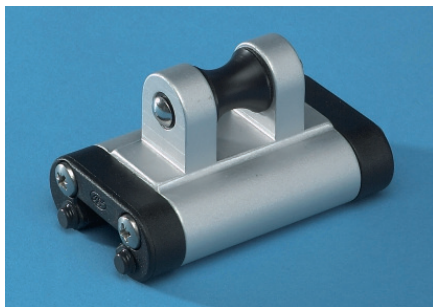
No. 03130
No. 03131



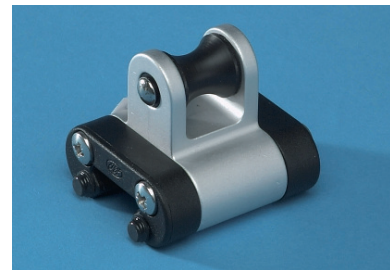
No. 03134
No. 03135



No. 03132
No. 03133



No. 03138
No. 03139



No. 03136
No. 03137

Car features:

Car body in aluminium (6082 T6)
Anodised minimum 25 my
Available in natural or black colour

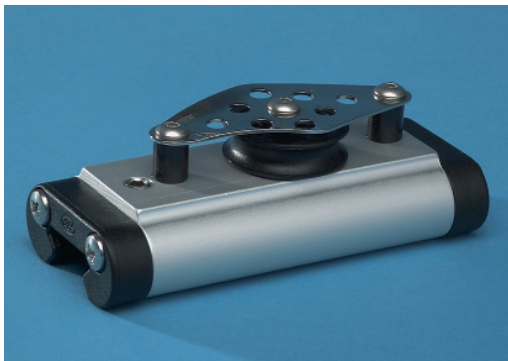
End caps in black delrin
Toggle and thread in aluminium
Anodised minimum 25 my

See page 37 for tracks
and mast groove slugs

Article No.	Type	SWL kg	BL kg	A mm	B mm	Width mm	Length mm	Slide type	Weight g	Track mm
Delrin Balls										
03130	Headboard car with stainless steel holder for headboard	2000	4000	43.5	88.5	65	255	Delrin Balls	1095	30
03132	Batten car with toggle and M12 mm tread for retainer	1400	2800	43.5	78	65	118	Delrin Balls	450	30
03134	Batten car with toggle and M12 mm tread for retainer	800	1600	43.5	78	65	77	Delrin Balls	315	30
03136	Webbing car	800	1600	43.5	57	65	77	Delrin Balls	240	30
03138	Webbing car STRONG	1400	2800	43.5	57	65	118	Delrin Balls	430	30
Delrin Rods										
03131	Headboard car with stainless steel holder for headboard	2400	4800	43.5	88.5	65	255	Delrin Rods	1095	30
03133	Batten car with toggle and M12 mm tread for retainer	1600	3200	43.5	78	65	118	Delrin Rods	450	30
03135	Batten car with toggle and M12 mm tread for retainer	900	1800	43.5	78	65	77	Delrin Rods	315	30
03137	Webbing car	900	1800	43.5	57	65	77	Delrin Rods	240	30
03139	Webbing car STRONG	1600	3200	43.5	57	65	118	Delrin Rods	430	30



No. 03051
No. 03053



No. 03072



No. 03071



No. 03070



No. 03068

Car features:

Car body in aluminium (6082 T6)
Anodised minimum 25 my
Available in natural or black colour

End caps in black delrin
10 mm Pinol screw, ables
you to lock it to the track
Cam cleats are adjustable in 3 positions

Control blocks in stainless steel 316
with black delrin plan bearing
sheave 45 x 12 mm
Max rope diameter 10 mm
Max SWL on control line 500 kg

Article No.	Type	SWL kg	BL kg	Sheave size mm	Sheave type	Max rope mm	Length mm	Slide type	Weight g	Track mm
Delrin Balls										
03051	Stop adjustable	500	1000				71	Delrin Balls	190	30
Delrin Rods										
03053	Stop adjustable	500	1000				71	Delrin Rods	190	30
03067	Control block double with becket and cam cleat (Starboard)	500	1000	45 x 12	Delrin plan bearing	10	140	Locked		30
03068	Control block double with becket and cam cleat (Port)	500	1000	45 x 12	Delrin plan bearing	10	140	Locked		30
03069	Control block with becket and cam cleat (Starboard)	500	1000	45 x 12	Delrin plan bearing	10	140	Locked		30
03070	Control block with becket and cam cleat (Port)	500	1000	45 x 12	Delrin plan bearing	10	140	Locked		30
03071	Control block double with becket	500	1000	45 x 12	Delrin plan bearing	10	140	Locked		30
03072	Control block with becket	500	1000	45 x 12	Delrin plan bearing	10	140	Locked	430	30



No. 03115



No. 03116



No. 03119



No. 03121

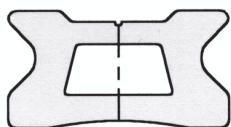
Car features:

Car body in aluminium (6082 T6)
Anodised minimum 25 my
Available in natural or black colour

End caps in black delrin
10 mm Pinol screw, ables
you to lock it to the track
Cam cleats are adjustable in 3 positions

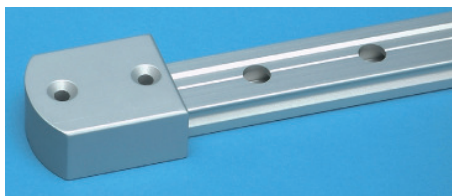
Control blocks in stainless steel 316
with black delrin plan bearing
sheave 45 x 12 mm
Max rope diameter 10 mm
SWL on control line 500 kg

Article No.	Type	SWL kg	BL kg	Sheave size mm	Sheave type	Max rope mm	Length mm	Slide type	Weight g	Track mm
Delrin Rods										
03115	Control block	500	1000	45 x 12	Delrin plan bearing	10	111	Locked	330	30
03116	Control block double	500	1000	45 x 12	Delrin plan bearing	10	111	Locked	370	30
03119	Control block with cam cleat (Port)	500	1000	45 x 12	Delrin plan bearing	10	111	Locked	30	
03120	Control block with cam cleat (Starboard)	500	1000	45 x 12	Delrin plan bearing	10	111	Locked	30	
03121	Control block double with cam cleat (Port)	500	1000	45 x 12	Delrin plan bearing	10	111	Locked	30	
03122	Control block double with cam cleat (Starboard)	500	1000	45 x 12	Delrin plan bearing	10	111	Locked	30	

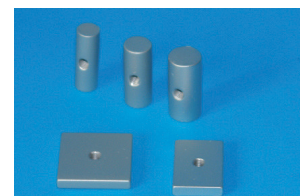


Track features:

Track in aluminium (6082 T6)
Anodised minimum 25 my
Available in natural or black colour



No. 03307



Mast groove slugs

Article No.	Type	Length m	Width mm	Height mm	Hole pitch mm	Fasteners mm	Weight g
03340	30 Track	1	30	16	50	6	790
03341	30 Track	1.5	30	16	50	6	1185
03342	30 Track	2	30	16	50	6	1580
03343	30 Track	2.5	30	16	50	6	1975
03344	30 Track	3	30	16	50	6	2370
03345	30 Track	4	30	16	50	6	3160
03346	30 Track	5	30	16	50	6	3950
03347	30 Track	6	30	16	50	6	4740
03303	Delrin end cap for 30 track	27 mm	34	19		6	14
03307	Alu end for 30 track	58 mm	50	35	35	6	122
03371	30 track assembly	33 mm	12	4			2
03378	Mast groove slug for 30 mm track	30 mm	Ø 14			6	
03379	Mast groove slug for 30 mm track	30 mm	Ø 10			6	
03380	Mast groove slug for 30 mm track	30 mm	Ø 12			6	
03381	Mast groove slug for 30 mm track	30 mm	25	5		6	
03382	Mast groove slug for 30 mm track	30 mm	25	6		6	
03383	Mast groove slug for 30 mm track	30 mm	30	6		6	
03385	Mast groove slug for 30 mm track	25 mm	21	6		6	