

## CRANE PASSERELLES - CRANES

Strength combines with stylish lines in Cooney Cranes, Locker Cranes and Crane Passerelles.

A wide range of styles with pedestal and through deck mounting options ensures your exact specification is met.

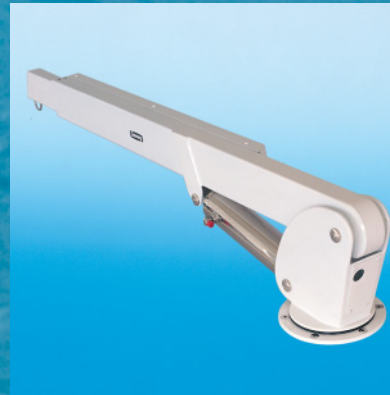
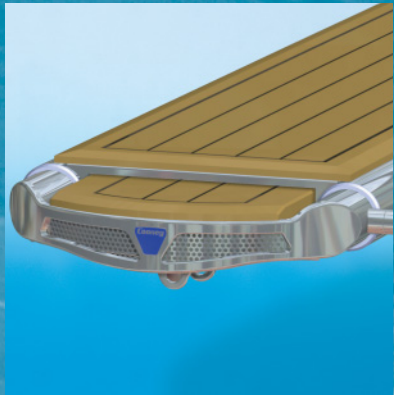
Cranes are fully hydraulic or manual and manual / electric configurations, with payloads up to 300kg - built with functionality and style in mind.

Crane Passerelles are a modification of the fully hydraulic crane utilising a passerelle fitted to the top of the crane beam with models in lengths of 1.8 to 2.5m and capacity up to 300kg.

Standard rotation is 180° with 360° as an option.

One extending version is available, reaching to 3m from 2.2m retracted.

- ▶ World Best
- ▶ Uncompromising Quality
- ▶ Design Technology
- ▶ Custom Product
- ▶ Deck Fittings
- ▶ Passerelles - Gangways
- ▶ Davits
- ▶ Davits - Options
- ▶ [Back to Start](#)



**Cooney™**