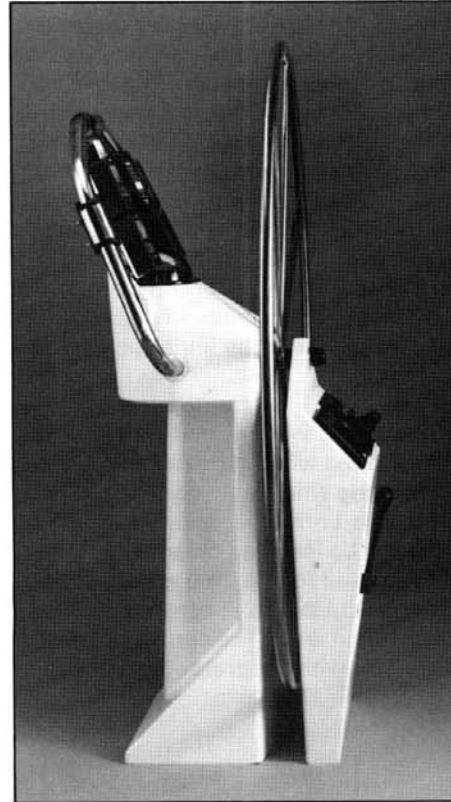
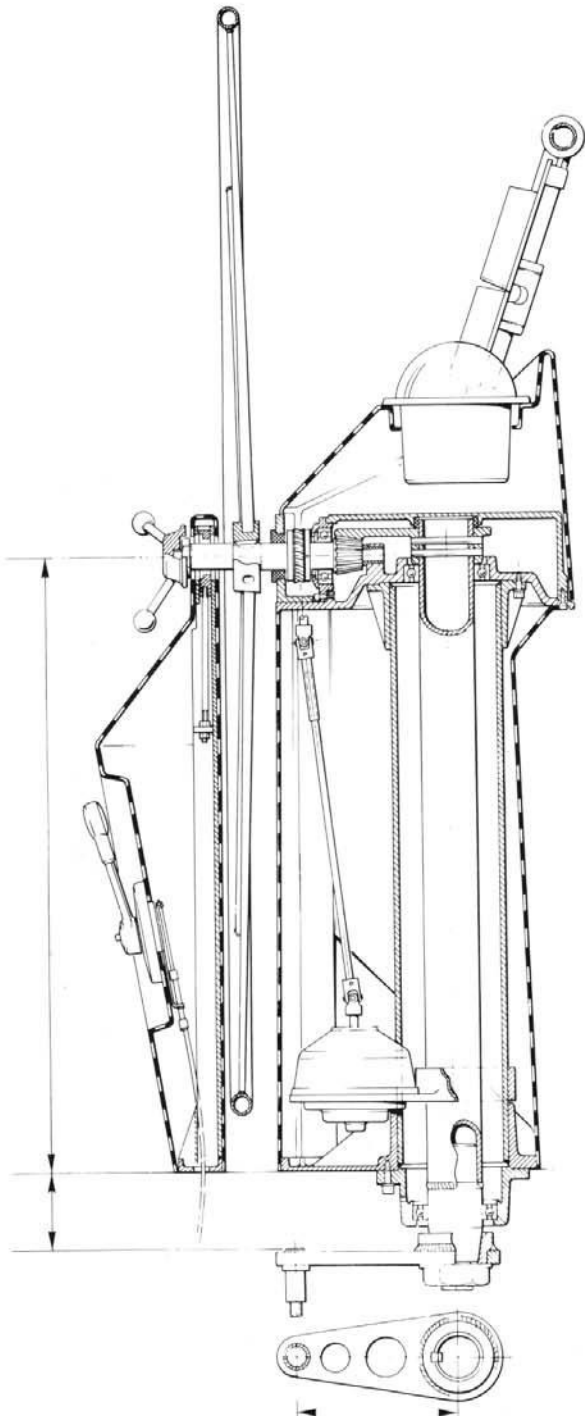


# I.S.S. Integrated Steering System

## Cobra Prestige

A larger cousin to the hugely successful Cobra systems, the Cobra Prestige™ is intended for aft cockpit sail boats up to 65' L.O.A. and is available with three gear ratios giving 1.8, 2.2 and 2.7 turns lock for full rudder travel. The system employs a circular rack and pinion drive for strength, reliability and ultimate 'feel'. By employing 'wide angle geometry' this system is more sensitive than a tiller in the critical 10°-0-10° rudder positions but gives substantially more mechanical advantage the closer full rudder travel is approached.



I.S.S.™ is more than a new yacht pedestal — it offers for the first time the facility to mount instruments, engine controls, navigational aids and the autopilot on one pedestal. Uniquely the autopilot drive has been incorporated into the pedestal space frame. When disengaged, there is zero drag on the steering system.

Contoured compass housing forms an integral part of the pedestal, provides an anti-glare shroud and places the compass in the ideal position to be viewed by the helmsman.



Instruments mountings are fully articulated and can be adjusted for port or starboard viewing.

Engine controls are readily accessible and safe to operate.

